





Josh Seek
Board Member
Director District #3

Dr. Sara Fagerlie
Board Member
Director District #2

Sarah Adams
Board Member
Director District #4

Jay Hagen
Board President
Director District #5

Shaunna Ballas
Board Vice President
Director District #1

Snohomish School District Board of Directors

The Snohomish School District Board of Directors is composed of five district citizens elected by voters to four-year terms. Their authority is established by the Washington State Legislature, and they act under the direction and restrictions of state law.

The board's legal responsibilities are:

- Establish general policy for the school system;
- Employ school personnel upon recommendation of the superintendent;
- Adopt the annual operating budget;
- Exercise the legislative powers conferred by the Legislature in overseeing school functions;
- Select the superintendent of schools; and
- School Board meetings.

School board meetings are generally held on the second and fourth Wednesdays of each month, with some exceptions for holidays and breaks. Board meetings are held at the Resource and Service Center at 1601 Avenue D in Snohomish unless otherwise noted. Most meetings begin at 6 p.m.

We value your input! Public comment is welcome at each school board meeting. School board members represent you, and they appreciate community involvement and input.

Please take the time to attend board meetings and share your thoughts. You can find more

information about the board of directors on our website at www.sno.wednet.edu/schoolboard. Meeting agendas and minutes are posted there, along with the current meeting schedule, board contact information and a full listing of board policies.

For questions about agenda items or upcoming meetings, or to contact a board member, you can also call the superintendent's office at 360-563-7280. Information is also located on the district's website at www.sno.wednet.edu/schoolboard.

From the Superintendent



Dear Families and Community Members:

Welcome to the 2023-2024 school year! We are a strong learning community where all of us come together to affirm our long-standing commitment to each and every child.

The annual calendar serves as a handbook, as well as a guide to the many events and activities in our classrooms, schools, and district. Use this calendar as you plan times to join us throughout the year. Please watch for other communications and stay in close contact with your school. If you have any questions not answered within this publication, please call our Communications Office at 360-563-7263 or my office at 360-563-7280.

It is an honor to serve our community through the education of all students. Together, each of us plays a critical role in helping ensure that every student thrives.

I look forward to working together with you throughout the year. Let's make it a great one!

Thanks,

Dr. Kent Kultgen
Superintendent

Cover: Glacier Peak High School Art 2 Collaboration

Contents

2	Snohomish School District Board of Directors	37	PLUSS
3	From the Superintendent	38	Operation School Bell
4	Partner with us for healthy schools	38	Student discipline rules
6	Inclement weather ahead	38	Student dress
8	Voter registration	38	Student safety
10	Highly capable/honors applications	38	Harassment, intimidation and bullying policy
12	Publications and student photographs	39	Prohibition of sexual harassment
14	Spring into Kindergarten	39	Student insurance
16	Thank you!	39	Attendance policies
18	Volunteer week	40	Integrated Pest Management
20	Teacher Appreciation Week	40	Asbestos management program
22	Have you moved or changed phone numbers?	40	Student appointments
24	New student registration	40	Health services
26	Snohomish Education Foundation (SEF)	40	Student emergencies
28	What's in this publication?	40	Life-threatening health conditions
28	Our Mission, Our Vision, Our Core Values & Our Commitments	41	Title IX, anti-discrimination statement
28	Safe Schools	41	Medication at school
28	School Messenger	41	Immunizations
29	Assessment calendar	42	Required vaccines for children entering school
30	Breakfast and lunch program	42	Vaccines required for school attendance
30	Free/reduced meals	43	Education Rights of Homeless Children and Youth
31	Online payments/TouchBase	44	Skykomish Valley Indian Education
32	Release of student directory information	44	Swim for Life
32	Child Find Notice	45	Speak Up!
32	Photos and social media guidelines	51	Snohomish Aquatic Center
33	Section 504	52	Contact information
34	Do you want to receive district and school newsletters?	54	2023–2024 start/dismissal times
34	Student records (FERPA)	54	Regular school schedule (Monday – Thursday)
34	School closure and late start information	54	Professional Growth Friday schedule
34	Inclement weather/late start	54	Half-day early dismissal schedule
35	Limited transportation	54	School office hours
35	Bus routes	55	Student housing questionnaire
35	Traversa Ride 360	57	Cuestionario sobre la Vivienda del estudiante
35	School bus safety	59	School attendance form
36	Early Childhood Education Assistance Program (ECEAP)	61	Asistencia a la escuela el formulario
36	Title I/LAP	63	Health History
37	Snohomish Community Food Bank	64	Emergency Information
37	Washington State Report Card	65	Historial De Salud
		66	Información De Urgencia
		67	2023–2024 special observances

Key

CA	Cathcart Elementary
CV	Cascade View Elementary
CE	Central Emerson Elementary (Central Campus)
DH	Dutch Hill Elementary
EM	Central Emerson Elementary (Emerson Campus)
LC	Little Cedars Elementary
MA	Machias Elementary
RV	Riverview Elementary
SH	Seattle Hill Elementary
TF	Totem Falls Elementary
CMS	Centennial Middle School
VVMS	Valley View Middle School
AIM	AIM High School
GPHS	Glacier Peak High School
SHS	Snohomish High School
ECEAP	Early Childhood Education Assistance Program
PPP	Parent Partnership Program
SAC	Snohomish Aquatic Center
SEF	Snohomish Education Foundation
SSD	District Wide
SVIE	Skykomish Valley Indian Education

*Gillian Jelenek –
AIM High School*



Partner with us for healthy schools

You can help prevent the spread of illness by keeping a sick child at home. A temperature of 100.4F (38C) or higher suggests infectious illness. Your child should be fever-free for 24 hours without medicine before returning to school. Diarrhea and/or vomiting, red eyes or eye drainage, or a rash with fever may also indicate infectious illness. Please contact your medical provider and keep your student home until they have received clearance to return to school. Also consider whether your child is rested and alert enough to learn, pay attention in class, and participate in all school activities.

September

AUGUST						
S	M	T	W	T	F	S
		1	2	3	4	5
6	7	8	9	10	11	12
13	14	15	16	17	18	19
20	21	22	23	24	25	26
27	28	29	30	31		

OCTOBER						
S	M	T	W	T	F	S
1	2	3	4	5	6	7
8	9	10	11	12	13	14
15	16	17	18	19	20	21
22	23	24	25	26	27	28
29	30	31				

SUNDAY	MONDAY	TUESDAY	WEDNESDAY	THURSDAY	FRIDAY	SATURDAY
					1 <i>Election Day</i> SSD Red, White and Blue Game	2
					<i>Professional Growth Friday</i> <i>(see page 54)</i>	

3	4 <i>Labor Day</i>	5 SAC Facility Closure	6 SAC Facility Closure SSD First Day of School	7 SAC Facility Closure	8 SAC Facility Closure AIM Picture Day <i>Professional Growth Friday (see page 54)</i>	9 SAC Facility Closure
10 SAC Facility Closure	11 GPHS Picture Make Ups RV Boo Hoo Breakfast, Hearing Screening SSD First Day of Kindergarten	12 VVMS Picture Make Ups RV PTO Meeting SH PTO General Meeting LC Vision Screening (K-Gr 3, Gr 5)	13 CMS Picture Day SSD Developmental Preschool Begins SSD Board Meeting	14 GPHS Curriculum Night DH Hearing Screening SHS Curriculum Night DH Watch DOGS Launch Event <i>Professional Growth Friday (see page 54)</i>	15 <i>Rosh Hashanah (begins)</i> SHS Picture Make Ups <i>Professional Growth Friday (see page 54)</i>	16
17 <i>Rosh Hashanah (ends)</i>	18 SVIE Back-to-School Dinner	19 EM Picture Day TF Hearing Screening (K-Gr 3, Gr 5)	20 LC Picture Day	21 LC Hearing Screening, Curriculum Night CMS Curriculum Night (Gr 7) AIM Parent/Guardian Group Meeting SVIE Board Meeting	22 <i>Professional Growth Friday (see page 54)</i>	23 <i>First Day of Autumn</i>
24 <i>Yom Kippur (begins)</i>	25 <i>Yom Kippur (ends)</i> ECEAP Half Start and Family Orientation	26 CA Curriculum Night (Gr 3-6) MA Picture Day CMS Curriculum Night (Gr 8) ECEAP Half Start and Family Orientation	27 CV Curriculum Night GPHS Picture Retakes DH Curriculum Night RV Picture Day TF Picture Day/Curriculum Night (K-Gr 2) SSD Board Meeting	28 CA Picture Day, Curriculum Night (K-Gr 2) CV PTA Meeting PPP Fall Family Festival MA Open House CE/EM Open House SH Picture Day, Open House TF Curriculum Night (Gr 3-6, 4/5/6)	29 <i>Professional Growth Friday (see page 54)</i>	30



Inclement weather ahead

See page 34 for information about school closure, late-start and limited transportation. Your child’s bus driver will let students know which roads will be impacted by limited transportation, and each school office has a list of the affected roads/areas within their boundaries. Once limited transportation has been announced for the day, it will remain in effect for both the morning and afternoon routes, even if roads have cleared during the day

www.sno.wednet.edu/transportation.

October 2023

SEPTEMBER						
S	M	T	W	T	F	S
					1	2
3	4	5	6	7	8	9
10	11	12	13	14	15	16
17	18	19	20	21	22	23
24	25	26	27	28	29	30

NOVEMBER						
S	M	T	W	T	F	S
				1	2	3
4	5	6	7	8	9	10
11	12	13	14	15	16	17
18	19	20	21	22	23	24
25	26	27	28	29	30	

SUNDAY	MONDAY	TUESDAY	WEDNESDAY	THURSDAY	FRIDAY	SATURDAY
1	2 GPHS Spirit Week DH PTA Board Meeting	3 GPHS Spirit Week	4 CV Picture Day GPHS Elementary Band Tour, Spirit Week SHS Band Elementary Tour	5 VVMS Curriculum Night GPHS Spirit Week AIM Curriculum Night SHS Band Elementary Tour RV Vision Screening SHS Band Elementary Tour GPHS Senior 101 Parent Night	6 GPHS Coronation Assembly, Spirit Week	7 GPHS Homecoming Dance
					Professional Growth Friday (see page 54)	

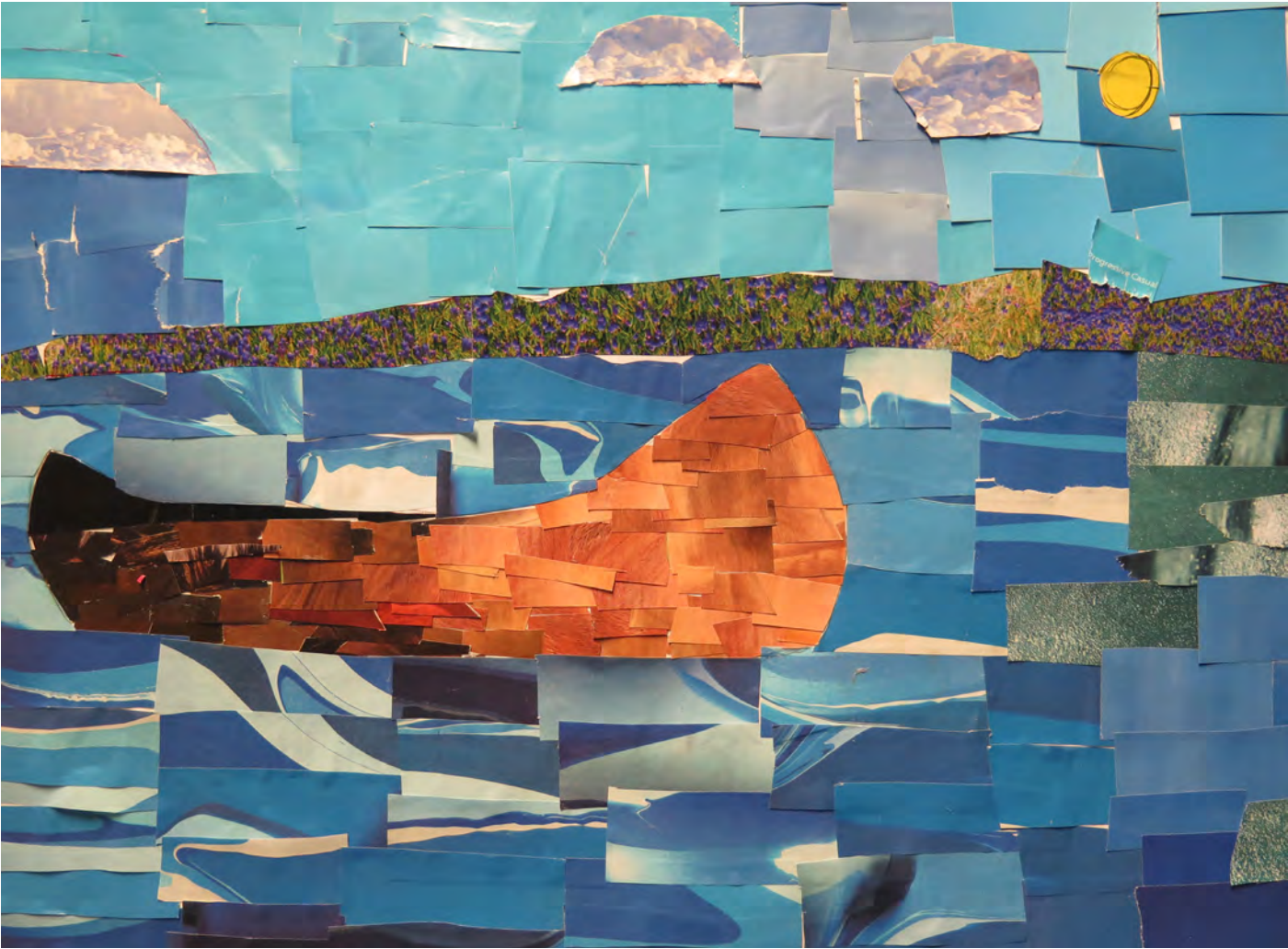
As a community service, schools provide assistance with voter registration. Check with your neighborhood school or the district's Resource and Service Center to register to vote or transfer your registration. Information is also located on the district website at www.sno.wednet.edu or at www.sos.wa.gov/elections/.

November

OCTOBER						
S	M	T	W	T	F	S
1	2	3	4	5	6	7
8	9	10	11	12	13	14
15	16	17	18	19	20	21
22	23	24	25	26	27	28
29	30	31				

DECEMBER						
S	M	T	W	T	F	S
					1	2
3	4	5	6	7	8	9
10	11	12	13	14	15	16
17	18	19	20	21	22	23
24	25	26	27	28	29	30
31						

SUNDAY	MONDAY	TUESDAY	WEDNESDAY	THURSDAY	FRIDAY	SATURDAY
			<div>1</div> <div>EMPicture Retakes</div> <div>LCPicture Retakes</div> <div>CMSPicture Retakes</div> <div>SSDNick of Time</div>	<div>2</div> <div>SHS</div> <div>LC</div> <div>SVIE</div> <div>Fall Band Concert</div> <div>Concert (Gr 5)</div> <div>Snohomish Culture Night</div>	<div>3</div> <div>AIM</div> <div>MA</div> <div>Picture Retakes</div> <div>School Dance (Fall Ball)</div> <div>Professional Growth Friday</div> <div>(see page 54)</div>	<div>4</div> <div>SH</div> <div>PTO Harvest Festival</div>



Highly capable/ honors applications

Watch for information about the district's elementary highly capable program and middle school honors program. Information, timelines and applications are available online and at your child's school.

High school advanced placement (AP) exams are given during May. Please contact your child's high school for specific subject testing dates.

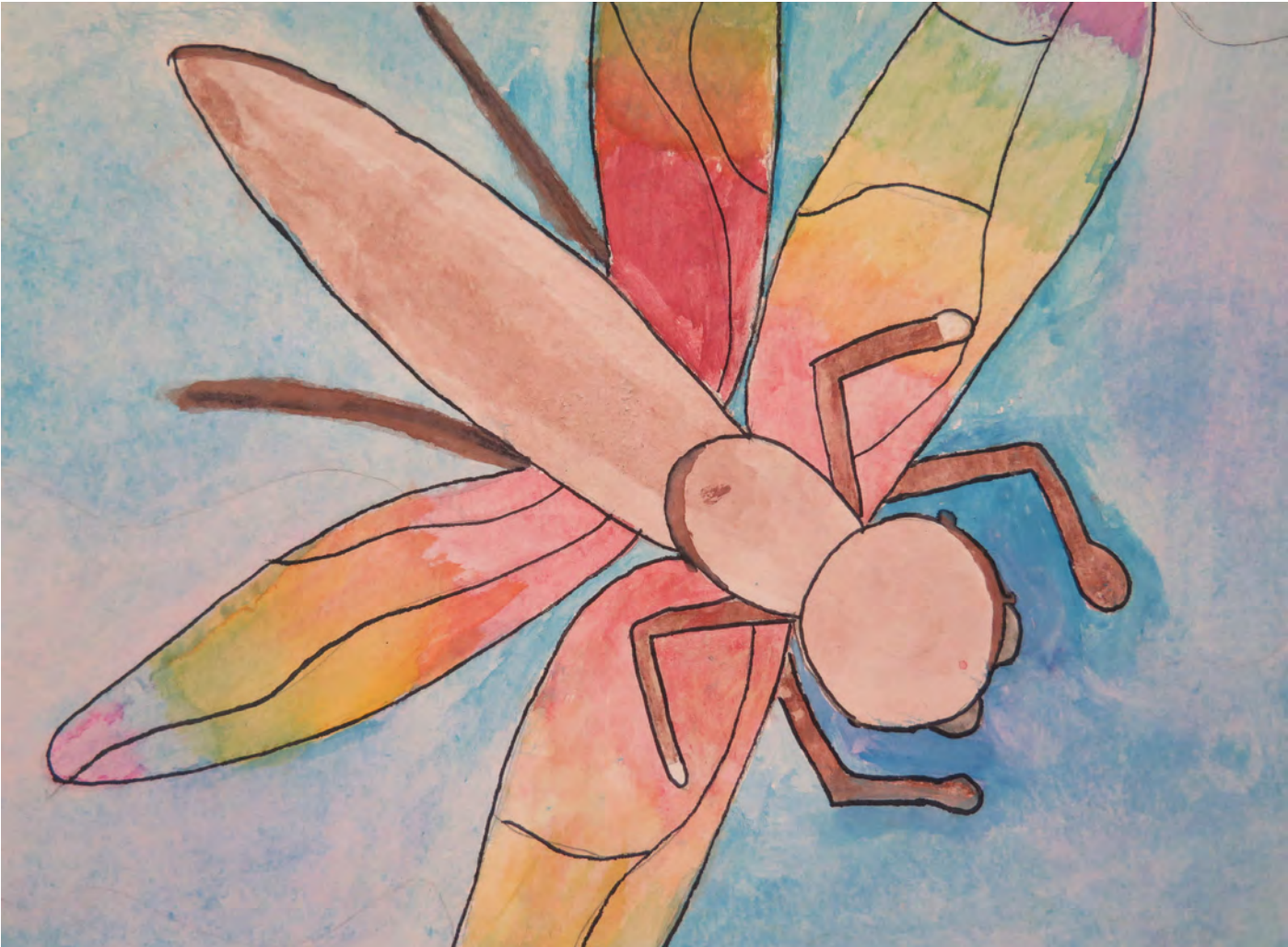
December

NOVEMBER						
S	M	T	W	T	F	S
				1	2	3
5	6	7	8	9	10	11
12	13	14	15	16	17	18
19	20	21	22	23	24	25
26	27	28	29	30		

JANUARY						
S	M	T	W	T	F	S
		1	2	3	4	5
7	8	9	10	11	12	13
14	15	16	17	18	19	20
21	22	23	24	25	26	27
28	29	30	31			

SUNDAY	MONDAY	TUESDAY	WEDNESDAY	THURSDAY	FRIDAY	SATURDAY
					<div>1</div> <div>SHS Fall Play</div>	<div>2</div> <div>CV Craft & Vendor fair</div> <div>SHS Fall Play</div> <div>SVIE Holiday Make and Take/Photos</div>
					Professional Growth Friday (see page 54)	

3	4 DH PTA Board Meeting	5	6 EM Concerts (Gr 3 & 4) ECEAP Parent Advisory Council Meeting	7 <i>Hanukkah (begins)</i> GPHS Winter Band Concert	8 CV Holiday "Grinch" Event DH PTA Movie Night SHS Club Photo Day, Fall Play	9 SHS Fall Play
10	11 MA Band Concert SHS Winter Spirit Week	12 VVMS /GPHS Holiday Choir Concert MA Music Concert SHS Winter Spirit Week RV PTO Meeting	13 SHS Winter Spirit Week, Holiday Choir Concert SSD Board Meeting	14 DH Concert (Gr. 2-3) MA Music Concert CE Jammies & Jingle Bells SHS Winter Spirit Week SH PTO Gingerbread Night TF Concert (Gr 3-4) ECEAP No ECEAP (Family Conferences)	15 <i>Hanukkah (ends)</i> SHS Winter Spirit Week	16
17	18 SHS Winter Band Concert SH Winter Spirit Week ECEAP No ECEAP (Family Conferences)	19 VVMS Winter Music Assembly SH Winter Spirit Week ECEAP No ECEAP (Family Conferences)	20 SH Winter Spirit Week, In-School Sing-Along ECEAP No ECEAP (Family Conferences)	21 <i>First Day of Winter</i>	22	23
24 SAC Holiday Closure	25 <i>Chistmas</i> SAC Holiday Closure	26 <i>Kwanza (begins)</i>	27	28	29	30
31	<div> <div></div> <div>Winter Break – No School</div> <div></div> </div>					



Publications and student photographs

There are times when photographs of students may be taken for district and school websites, social media applications, printed/electronic publications or other district use. If you do not want your child to appear in photographs or videos, please complete the photo opt-out form located on the district website or in your school office, and return to your school office by September 30 so that we may honor your request. Forms must be filled out each year.

January2024

DECEMBER						
S	M	T	W	T	F	S
					1	2
3	4	5	6	7	8	9
10	11	12	13	14	15	16
17	18	19	20	21	22	23
24	25	26	27	28	29	30
31						

FEBRUARY						
S	M	T	W	T	F	S
					1	2 3
4	5	6	7	8	9	10
11	12	13	14	15	16	17
18	19	20	21	22	23	24
25	26	27	28	29		

SUNDAY	MONDAY	TUESDAY	WEDNESDAY	THURSDAY	FRIDAY	SATURDAY
	1 New Years Kwanzaa (ends)	2	3 ECEAP No ECEAP	4	5	6 GPHS/SHS DECA Area 1 Competition
Winter Break – No School						
					Professional Growth Friday (see page 54)	



Spring into Kindergarten

Do any kindergarten-age children live in your neighborhood? Be sure to tell parents/guardians about our Thursday, March 7, Spring into Kindergarten registration event. To enter kindergarten, a child must be 5-years-old on or before August 31.

February 2024

JANUARY						
S	M	T	W	T	F	S
	1	2	3	4	5	6
7	8	9	10	11	12	13
14	15	16	17	18	19	20
21	22	23	24	25	26	27
28	29	30	31			

MARCH						
S	M	T	W	T	F	S
					1	2
3	4	5	6	7	8	9
10	11	12	13	14	15	16
17	18	19	20	21	22	23
24	25	26	27	28	29	30
31						

SUNDAY	MONDAY	TUESDAY	WEDNESDAY	THURSDAY	FRIDAY	SATURDAY
				1 SH Concert (Gr 5)	2 SH Donuts with Grown Ups	3 GPHS Band and Choir Solo/ Ensemble SHS FBLA Winter Leadership Conference
					Professional Growth Friday (see page 54)	



Thank you!

Thank you! Bus drivers, paraeducators, office staff, support staff, and maintenance/custodial/facilities personnel make our schools warm, safe, efficient and supportive places for Snohomish students to learn. Education Support Professionals Week is March 11-15. For a list of other educational observation days and weeks please see the inside back cover.

March 2024

FEBRUARY						
S	M	T	W	T	F	S
				1	2	3
4	5	6	7	8	9	10
11	12	13	14	15	16	17
18	19	20	21	22	23	24
25	26	27	28	29		

APRIL						
S	M	T	W	T	F	S
	1	2	3	4	5	6
7	8	9	10	11	12	13
14	15	16	17	18	19	20
21	22	23	24	25	26	27
28	29	30				

SUNDAY	MONDAY	TUESDAY	WEDNESDAY	THURSDAY	FRIDAY	SATURDAY
					<div>1</div> <div>GPHS/SHS</div> <div>CWU Band Festival</div> <div>DH PTA Movie Night</div> <div>SHS DECA State Career Development Conference</div> <div>CV Walk-A-Thon</div> <div>Professional Growth Friday (see page 54)</div>	<div>2</div> <div>SHS Macho Volleyball</div> <div>SHS DECA State Career Development Conference</div>

17



Volunteer week

An involved community makes strong schools. School volunteers add to the richness of our students' experiences. Thank you for being part of our team! Public School Volunteer Week is April 22-26. For a list of other educational observation days and weeks please see the inside back cover.

April 2024

MARCH						
S	M	T	W	T	F	S
					1	2
3	4	5	6	7	8	9
10	11	12	13	14	15	16
17	18	19	20	21	22	23
24	25	26	27	28	29	30
31						

MAY						
S	M	T	W	T	F	S
				1	2	3
4	5	6	7	8	9	10
11	12	13	14	15	16	17
18	19	20	21	22	23	24
25	26	27	28	29	30	31

SUNDAY	MONDAY	TUESDAY	WEDNESDAY	THURSDAY	FRIDAY	SATURDAY
	1	2	3	4	5	6
← Spring Break – No School →						

19



Teacher Appreciation Week

“It is the supreme art of the teacher to awaken joy in creative expression and knowledge.”
– Albert Einstein

Thank you Snohomish teachers! National Teacher Appreciation Week is May 6-10. For a list of other educational observation days and weeks please see the inside back cover.

May 2024

APRIL						
S	M	T	W	T	F	S
	1	2	3	4	5	6
7	8	9	10	11	12	13
14	15	16	17	18	19	20
21	22	23	24	25	26	27
28	29	30				

JUNE						
S	M	T	W	T	F	S
						1
2	3	4	5	6	7	8
9	10	11	12	13	14	15
16	17	18	19	20	21	22
23	24	25	26	27	28	29
30						

SUNDAY	MONDAY	TUESDAY	WEDNESDAY	THURSDAY	FRIDAY	SATURDAY
			<div>1</div> <div>DH CE SHS</div> <div>Class Pictures Class Pictures DECA International Competition</div>	<div>2</div> <div>CV CE RV LC</div> <div>PTA Meeting Concert (Gr 1) Fun Run Fundraiser Concert (Gr 1 & 3)</div>	<div>3</div> <div>DH GPHS SHS SH</div> <div>Fun Run Moawad Jazz Invitational Spring Musical AquaSox Reading Program Ends</div>	<div>4</div> <div>SHS</div> <div>Spring Musical</div>
					Professional Growth Friday (see page 54)	



Have you moved or changed phone numbers?

Please remember to check and update (as necessary) your contact information with your child’s school or on Skyward/Family Access. This is important in case we need to reach you in the event of an illness, injury or school emergency.

June 2024

MAY						
S	M	T	W	T	F	S
			1	2	3	4
5	6	7	8	9	10	11
12	13	14	15	16	17	18
19	20	21	22	23	24	25
26	27	28	29	30	31	

JULY						
S	M	T	W	T	F	S
	1	2	3	4	5	6
7	8	9	10	11	12	13
14	15	16	17	18	19	20
21	22	23	24	25	26	27
28	29	30	31			

SUNDAY	MONDAY	TUESDAY	WEDNESDAY	THURSDAY	FRIDAY	SATURDAY
						1 GPHS Prom SHS Prom
					Professional Growth Friday (see page 54)	

2	3 CMS/VVMS/GPHS/SHS Jazz Explosion XXXVII DH PTA Board Meeting SH BOGO Book Fair	4 GPHS Choir Banquet DH Field Day SHS Jazz Explosion Concert SH BOGO Book Fair	5 DH Grown Ups & Donuts (last name A-K) SH Job Corps & Patrol Recognition Assembly, BOGO Book Fair	6 AIM Graduation DH Grown Ups & Donuts (last name L-Z) SHS Panther2Panther, Senior Sunset SH BOGO Book Fair ECEAP Last Day SVIE Awards Dinner	7 CV All Family Picnic VVMS 8th Grade Celebration SHS Senior Breakfast SH All School Family Picnic, BOGO Book Fair	8
					Professional Growth Friday (see page 54)	
9 GPHS/SHS Baccalaureate	10 GPHS/SHS Graduation DH Gummy Bear Play Day SH Willis Tucker Park (Gr. 6)	11 DH 6th Grade Celebration, Kindy Celebration/Concert SH 6th Grade Recognition	12 DH Beach Day (Gr. 6) EM 6th Grade Recognition SH All School Field Day SSD Board Meeting	13 SVIE Board Meeting SSD Last Day of School	14	15
				Half-Day Early Release (see page 54)	Snow/Inclement Weather Make-Up Day	
16 Father's Day	17	18	19 Juneteenth	20	21	22
						
	Snow/Inclement Weather Make-Up Day	Snow/Inclement Weather Make-Up Day		Snow/Inclement Weather Make-Up Day	Snow/Inclement Weather Make-Up Day	
23	24	25	26 SSD Board Meeting	27	28	29
30						



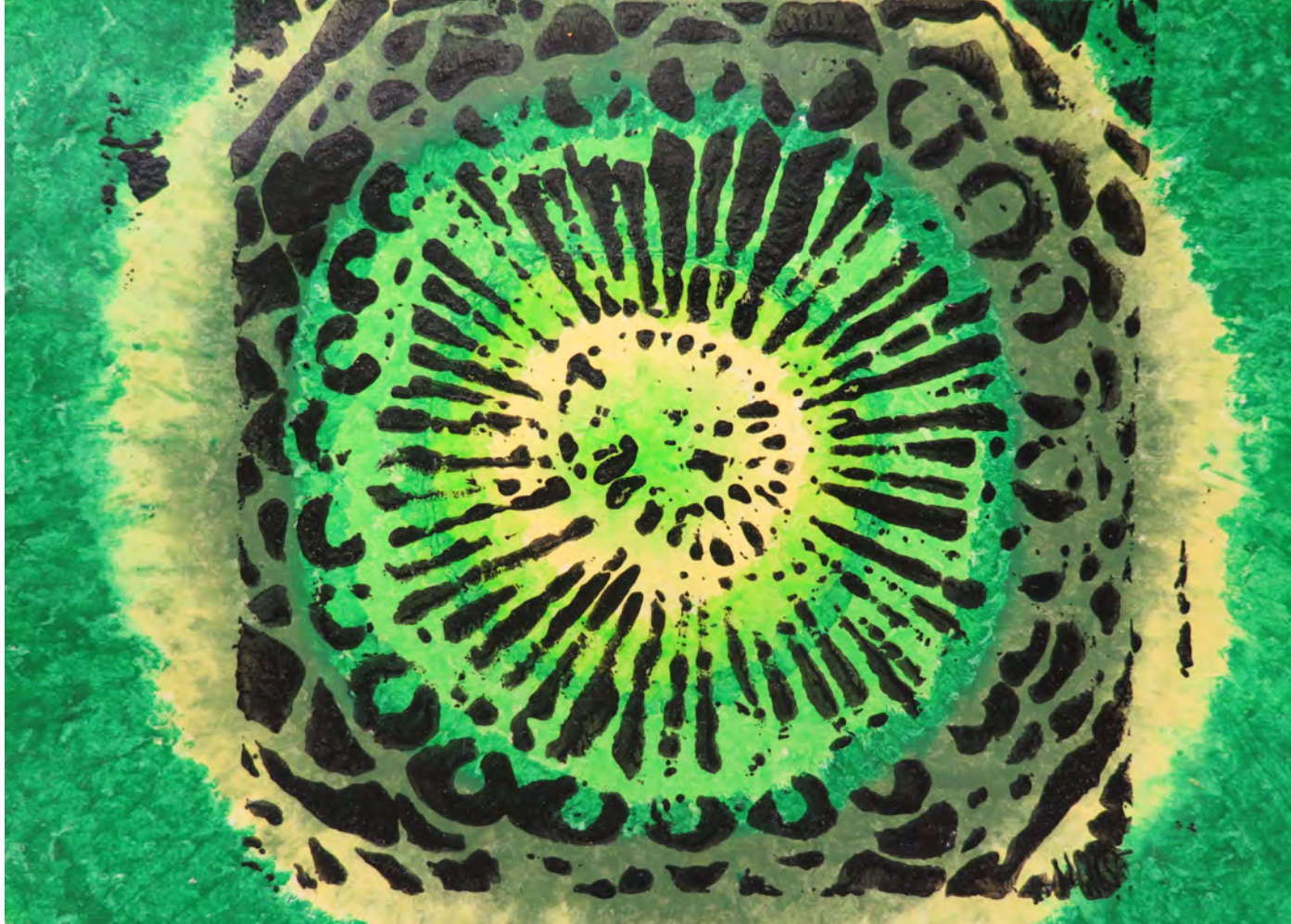
Our district has an online process to enroll and register incoming kindergarten students and new students to the district. This process is not for students transferring to another school within the district. Prior to using the online application process, families are advised to have the required documents available to upload into the application. Learn more at www.sno.wednet.edu/newstudentenrollment.

July 2024

JUNE						
S	M	T	W	T	F	S
						1
2	3	4	5	6	7	8
9	10	11	12	13	14	15
16	17	18	19	20	21	22
23	24	25	26	27	28	29
30						

AUGUST						
S	M	T	W	T	F	S
				1	2	3
4	5	6	7	8	9	10
11	12	13	14	15	16	17
18	19	20	21	22	23	24
25	26	27	28	29	30	31

SUNDAY	MONDAY	TUESDAY	WEDNESDAY	THURSDAY	FRIDAY	SATURDAY
	1	2	3	4 <i>Independence Day</i> SAC Holiday Closure	5	6



The Snohomish Education Foundation (SEF) was formed in 1986 to provide broader educational opportunities for students and teachers of our district. Since 1995, the SEF has awarded more than \$1 million in classroom grants and has helped fund other critical district programs. Since 1990, the SEF has also awarded Snohomish School District graduates millions of dollars in scholarships. To donate or for more information, contact the SEF at 360-568-5292 or www.snoed.org.

August 2024

JULY						
S	M	T	W	T	F	S
	1	2	3	4	5	6
7	8	9	10	11	12	13
14	15	16	17	18	19	20
21	22	23	24	25	26	27
28	29	30	31			

SEPTEMBER						
S	M	T	W	T	F	S
1	2	3	4	5	6	7
8	9	10	11	12	13	14
15	16	17	18	19	20	21
22	23	24	25	26	27	28
29	30					

SUNDAY	MONDAY	TUESDAY	WEDNESDAY	THURSDAY	FRIDAY	SATURDAY
				1	2	3

4	5	6 <i>Election Day</i>	7	8	9	10
11	12	13	14 SSD Board Meeting	15	16	17
18	19	20	21	22	23	24
25	26	27	28 SSD Board Meeting	29	30	31

What's in this publication?

The 2023–2024 district calendar includes important dates for many school district events and activities, as well as information we must legally provide and information we feel will be important to you. Please note that the events in this calendar are accurate as of July 2023, but may have changed due to unforeseen circumstances or scheduling conflicts. Our websites and school newsletters are excellent ways for parents/guardians to stay informed of the most up-to-date information regarding events and activities.

Our Mission, Our Vision, Our Core Values & Our Commitments

Our Mission – To create an educational community that ignites a passion for learning where every student is known and empowered.

Our Vision – Every student thrives.

Our Core Values

- Student-Focused,
- Culture of Belonging
- Equity,
- Accountability

Our Commitments

- Teaching & Learning Excellence
- Family & Community Engagement
- Student & Staff Well-Being
- Resource Management

Learn more at www.sno.wednet.edu/strategicplan.

SafeSchools

SafeSchool Alert is our district's tip reporting service. If you have information about a threat to our safety (threats, bullying, intimidation, harassment, weapons, drugs, and other safety concerns), do your part and report it! And remember, you can remain anonymous. You can report using any of the ways noted below. Links are also available on the district and school websites.

Easy ways to report

- Visit the website – www.sno.wednet.edu/safeschools
- Email your tip to 1796@alert1.us
- Call to report your tip 360-217-0587
- Text your tip to 360-217-0587
- For emergencies, please call 911

School Messenger

Our district uses the School Messenger automated system as a tool for communication with our parents/guardians, students, families and staff. School Messenger works with the district's student-data system (Skyward/Family Access) to notify families and staff through phone and/or email of emergencies, inclement weather situations, attendance issues, underfunded student lunch accounts and other events/activities. The overall goal of using this service is for parents families to receive important information about Snohomish schools—especially information that affects their children—in a timely manner. As long as we have a primary phone number and/or email on record for a student, the student's family should automatically receive these messages when they are sent out.

For more information, see the district website at www.sno.wednet.edu/communications.



Abigail Molsee –
AIM High School

Assessment calendar

This is a tentative assessment calendar based on information we currently have for state testing and our own district assessment schedule. Dates are subject to change. Please check our district's website for updated information throughout the year and utilize OSPI's testing timeline at www.k12.wa.us/assessment/StateTesting/timelines-calendars.aspx.



Will Rotondo – Dutch Hill Elementary

Testing Window	Assessment	State/District	Schedule Set By	Grades	# of Days*
September 2023	Brigance (Special Education)	District	Locally Approved Schedule	P–12	Variable
September - November 2023	WaKIDS – State Funded Kindergarten	State	Building Schedule	K	Ongoing
September - October 2023	Fall Math/Literacy District Benchmark (STAR)	District	Building Schedule	2–9	1–2 days
September - November 2023	WA-AIM (Special Education) Fall Retake	State	Locally Approved Schedule	11–12	Variable
October 2023	Panorama Survey	State	Building Schedule	K–12	1 day
January 2024	Winter Math/Literacy District Benchmark	District	Building Schedule	2–9	1–2 days
January - March 2024	WIDA 21 – English Language Proficiency Assessment	State	Locally Approved Schedule	K–12	1–3 days
February 2024	Panorama Survey	State	Building Schedule	3–12	1 day
March 2024	ACT	District	ACT Approved	11	1 day
March - June 2024	SBA ELA & Math	State	Locally Approved Schedule	3–8, 10	2–4 days
April - June 2024	WCAS (Science Test)	State	Locally Approved Schedule	5, 8, 11	1 day
May 2024	AP Exams	District	College Board Approved Schedule	9–12	1 day each exam
May - June 2024	Spring Math/Literacy District Benchmark (STAR)	District	Building Schedule	2–8	1–2 days
June 2024	Panorama Survey	State	Building Schedule	3–12	1 day

Glossary

ELA	English Language Arts EOC End of Course
SBA	Smarter Balanced Assessment
ELPA	English Language Proficiency Assessment Benchmark Periodic measure of student progress through the year
WaKIDS	Washington Kindergarten Inventory of Developing Skills

* # of days is dependent upon how test sessions are administered.

Breakfast and lunch program

Our district and our partner, Chartwells, work hard to provide students and staff with good-tasting, nutritious meals. All district schools serve lunch and breakfast. Free and reduced-price meals are available to all students who qualify. If you have questions about the free and reduced meal program, please call 360-563-7314. Any other questions may be directed to our Food Service department at 360-563-7298.

	Breakfast	Lunch	Free and Reduced Meal Program
Elementary	\$1.75	\$3.25	Free
Middle and high schools	\$2.50	\$3.50	Free
Adult	\$3	\$5	
Milk	\$0.50	\$0.50	Free with meal

Student ala carte purchases, transactions and food service balances are the financial responsibility of parents and/or guardians. All schools use an electronic point-of-sale system that keeps a running balance. This can be used for breakfast, lunch and a la carte purchases. Learn more at www.sno.wednet.edu/foodservice.

Free/reduced meals

To learn more about the free/reduced meal program, visit www.sno.wednet.edu/freereducedmeals.

Compare the size and income of your household to the USDA Income Guidelines. If your total household income is below or within the posted guidelines, print and complete the application available at www.sno.wednet.edu/freereducedmeals and then send it to Snohomish School District, Attn: Meal Applications, 1601 Avenue D, Snohomish, WA 98290 or turn it in at your child's school.



Walter Moore – Central Emerson Elementary (Central Campus)



Jaxon
Honcoop—
Parent
Partnership
Program

Online payments/ TouchBase

Snohomish School District uses the TouchBase system to pay online fees. Student food service accounts, athletic fees, fines and other fees may be paid online using credit/debit cards through the TouchBase link - wa-snohomish.intouchrecepting.com/

The bookkeeping office can accept cash or checks as well as credit/debit cards.

Please pay online to avoid wait times at your school bookkeeping or main office. The link is - wa-snohomish.intouchrecepting.com/. Payments made to a student's food service account will be reflected within 12–24 hours.

Parents/guardians with multiple students in the district are able to see all of their students with your one username and password. Once they've selected the student, the shopping experience will be specific to that student. Parents/guardians must be signed with the parent's/guardian's Skyward/Family Access login in order to view all of the students in the household. If logged in as a student, the individual will only be able to see that individual student.

Learn more at www.sno.wednet.edu/onlinepayments.

Release of student directory information

Procedure number 3231, Student Records, states that the district may publicly release directory information without consent. In instances where directory information is disclosed, such disclosure does not reflect the district's approval or endorsement of the activities or viewpoints of the recipient of such information. This directory information may include the student's name, address (physical and e-mail), phone number (home and cell), date and place of birth, photograph, dates of attendance, participation in officially recognized sports and activities, height and weight of members of athletic teams, diplomas and awards, and most recent previous school attended.

Those who do not want such information released should contact the district's Communications Department at communications@sno.wednet.edu or 360-563-7263. Parents/guardians and students may also notify their school office in writing as soon as possible each new school year.

This information will be not be released for commercial purposes.

Also, federal law requires the district to provide military recruiters with names, addresses and telephone numbers of secondary students upon request unless parents have advised the district in writing that they do not want their child's information released.

Child Find Notice

The Special Services Office seeks to identify any students, age birth to 21, who may have disabling conditions. Anyone may make referrals. Screening is free and appointments are required. Please contact the district office at 360-563-7310 to request a screening.

Photos and social media guidelines

There are times during the year when photos or audio-visual recordings of students may be taken for use by the district, school or teacher. When possible, we will alert parents in advance, but this is not always possible. In addition, the district's photo consent/opt-out form only pertains to photos and audio-visual recordings taken for district, school or teacher exclusive use and purposes. The consent form does not include or pertain to those photos taken by parents/guardians, parent organizations, clubs, etc.

It is important to be aware that student family members, community members and attendees at school events may take and publish photos and other recordings of students without coordinating such with school district personnel, and it is possible that students could appear in a third

party's photos and other recordings. The Snohomish School District is not responsible for the use of any students' likeness (photo, voice, etc.) that appears in those photos and recordings.

Below are some simple guidelines we ask parents/guardians and others to follow in regard to taking personal photos/videos and posting them online or on social media. These guidelines are encouraged to protect student confidentiality and safety.

- Only take photos/videos of your own child.
- Do not tag or list student names on photos/videos.
- Any photo/video taken by a company is copyrighted and should not be posted (e.g. yearbook, class and individual student pictures).
- Many parents/guardians do not want their child's photo/video online. Permission from the child's parent/guardian must be received prior to posting any pictures/videos from school/classroom events. For your own protection, documentation of this

permission (handwritten note, copy of an email message, etc.) should be obtained should questions arise in the future.

- Pictures/videos should not be taken at school for the purpose of posting online. Prior permission from the school office must be obtained any time you take pictures on campus.
- Student photos/videos are not to be used to promote a business of any kind.



Katherine Hynes – Little Cedars Elementary

Section 504

What is a Section 504?

Section 504 of the Rehabilitation Act of 1973, commonly called “Section 504,” is a federal law that protects students from discrimination based on disability. Section 504 assures that students with disabilities have educational opportunities and benefits equal to those provided to students without disabilities. To be eligible, a student must have a physical or mental impairment that substantially limits one or more major life activities.

The Section 504 process

Your child has the right to an evaluation before the school determines if he or she is eligible under Section 504. You have the right to:

- Receive notice before the district takes any action regarding the identification, evaluation, and placement of your child.
- Have evaluation and placement decisions based on a variety of sources, and made by a group of persons who know your child, the meaning of the evaluation information, and the placement options available.
- Refuse consent for the initial evaluation and initial placement of your child.
- If your child is eligible under Section 504, your child has a right to periodic re-evaluations, including re-evaluations before any significant change is made in your child’s placement.

Your child’s educational records

You have the right to:

- Review your child’s educational records and to receive copies at a reasonable cost. You will not be charged if the cost would keep you from reviewing the records.

- Ask the district to change your child’s education records if you believe that they are inaccurate, misleading, or are otherwise in violation of your child’s privacy rights. If the district refuses this request, you have the right to challenge the refusal by requesting an impartial hearing.
- A response to your reasonable requests for explanations and interpretations of your child’s education records.
- Your child’s education

Your child has the right to:

- Receive a free and appropriate public education.
- Participate in and benefit from the district’s educational programs without discrimination.
- Be provided an equal opportunity to participate in the district’s nonacademic and extracurricular activities.
- Be educated with students who do not have disabilities to the maximum extent appropriate.
- Be educated in facilities and receive services that are comparable to those provided to students without disabilities.
- Receive accommodations and/or related aids and services to allow your child an equal opportunity to participate in school activities.
- Receive educational and related aids and services without cost, except for those fees imposed on the parents of children without disabilities.
- Receive special education services if needed.

If you disagree with the district’s decision

If you disagree with the district’s decisions regarding your child’s identification, evaluation, educational program, or placement under Section

504, you may request mediation or an impartial due process hearing. You and your child have the right to take part in the hearing and have an attorney represent you.

Hearing requests and other concerns can be made to the district’s Section 504 Coordinator.

You have the right to file a local grievance or complaint with the U.S. Department of Education’s Office for Civil Rights (OCR), 206-607-1600/TDD 206-607-1647 or www.ed.gov/OCR.



Dallin Tarleton – Valley View Middle School

Do you want to receive district and school newsletters?

Our district uses an electronic mailing list to send our district and school newsletters and communications. If you would like to subscribe, please visit our district website at www.sno.wednet.edu/subscribe. In the quick link section of the district and school websites, you will also see a link to subscribe to newsletters.

If you are already a subscriber, don't forget to change your preferences if your e-mail address changes or if you would like to change which schools you receive communications about.

Student records (FERPA)

The Family Educational Rights and Privacy Act (FERPA) is a federal law that protects the privacy of student education records. The rights transfer to the student when he or she reaches the age of 18 or attends a school beyond the high school level. The parent or eligible student has a right to:

- Inspect and review the student's education records;
- Request amendment of the student's education records that they believe to be inaccurate or misleading (see Board Policy and Procedure 3231 and 3231P);
- Consent to disclosure of personally identifiable information contained in the student's education records, except to the extent that FERPA and its regulations authorize disclosure without consent;
- Obtain a copy of the policy in the parent's primary language. A copy of the full policy is available upon request from Shawn Stevenson, Deputy Superintendent, at the Snohomish School District Resource and Service Center, 1601 Avenue D, Snohomish, WA 98290.

School closure and late start information

When a decision is made to close school or start late, calls are placed to families through School Messenger. Local radio and television stations also announce school closure or late start information. If Snohomish is not mentioned during the newscast, you will know our schools are open and buses are operating on or near the normal schedule. Because safety is the determining factor, buses may run behind schedule when fog, ice or snow conditions exist. Parents are urged to make sure their children are adequately clothed so waiting in cold weather will not be uncomfortable. Learn more on the district website at www.sno.wednet.edu/weather.

Inclement weather / late start

In the event of inclement weather/late start, all schools will start two hours late and dismiss at their regular times unless otherwise announced. Additional changes during late start include:

- No a.m. and/or p.m. half-day special education preschool, or ECEAP.
- No morning elementary band.
- No zero-hour classes.
- No morning Sno-Isle TECH.
- No out-of-district transportation.
- Buses may be on normal routes or limited transportation (snow) routes (decision will remain in effect for the entire day).
- Morning and afternoon sessions at AIM High School will be adjusted.



*Piper Karpinen -
Cathcart Elementary*

Limited transportation

When weather conditions dictate that certain roads are not safely passable, the district will announce that it is providing “limited transportation.” These roads are listed on the district website. Once limited transportation has been announced for the day, it will remain in effect for both the morning and afternoon routes, even if roads have cleared during the day.

Bus routes

Our Transportation Department is responsible for developing student bus routes and schedules.

If you see an issue with your child’s transportation information, transportation assistance is currently available Monday through Friday from 7 a.m. to 4 p.m. by calling 360-563-3525 or emailing transportation@sno.wednet.edu.

Posted bus routes and pick-up and drop-off times are approximate. Please remember that traffic, weather and other unforeseen circumstances may cause some routes to be early or delayed. It is recommended that children arrive at their bus stops at least five minutes prior to the published times.

It is our district’s practice that kindergarteners will not be let off the bus unless the child’s parent/guardian (or designated adult) is at the bus stop at the time of student drop-off. Kindergarteners whose parent/guardian is not at the bus stop will be returned to the student’s elementary school where the parent/guardian (or emergency contact) will be called for student pick-up.

Traversa Ride 360

Traversa Ride 360 provides secure access to student routing information and provides quick access to your child’s routing information, which can include the bus stop, route, and bus number. This is accessible on mobile devices, and confidential and secure. This program can be accessed via the web or mobile app and is free to download and use.

Scan ridership cards will be distributed to every student throughout the school year and will act as their ID when riding the bus during the school year.

You can download the Traversa 360 app or visit the website at <https://wasnohomishsd201.traversaride360.com/>

Parents/guardians will need to use their child’s ID# and date of birth of birth to add their children to the app.

School bus safety

Families and schools share the responsibility for providing a safe environment for students while they are riding district buses and during times of emergency school closures. Please encourage your student(s) to be cooperative in observing the bus safety rules.

Students need to arrive at their bus stops five minutes prior to the published time. Students on buses are expected to follow behavior rules corresponding to classroom conduct regulations. They must sit properly in their seats, refrain from throwing objects, keep their hands to themselves, wear seatbelts, be courteous to others, and obey the bus drivers at all times. Drivers will give bus conduct reports to students who do not follow bus rules, and administrators have the authority to take appropriate

disciplinary action, including suspending a student from riding the bus.

Snohomish bus drivers meet all school bus driver certification and CDL requirements, and are well-trained in the use of their bus and emergency equipment. All buses are equipped with two-way radios, most have sanders, and all can use chains when necessary. In addition, buses have video cameras. Student safety training extends from reviewing the riders’ rules to rehearsing emergency exit procedures. Emergency exit drills are practiced periodically during the year; the bus driver will instruct students on the use of emergency exits and will supervise students as they practice their use.

We have an outstanding record for keeping our buses and other vehicles safe and well maintained. Our vehicle maintenance crew has received commendations from the Washington State Patrol and the Office of the Superintendent of Public Instruction for safety inspections.



Madeline Floren – Glacier Peak High School

Early Childhood Education Assistance Program (ECEAP)

Children 3 and 4 years of age whose parents meet family income guidelines are eligible for family-centered preschool enrichment programs located at Central Emerson Elementary (Central Campus). ECEAP is state-funded and is provided at no cost to the family. ECEAP students and their families are also provided access to a variety of health and social services. The program promotes physical, social, intellectual and emotional growth and well-being of children from limited-income families. For further program or registration information, please call 360-563-4641.

Title I/LAP

Title I is the largest federal aid program for our nation's schools. The Learning Assistance Program (LAP) is a state-funded program. The purpose of Title I and LAP is to provide opportunities and services to students who are at risk of not meeting our state's performance standards. Title I provides supplemental support in reading, writing and/or mathematics to identified students. Individual schools determine the grade levels and specific subject areas to be served. Title I and LAP programs are located in most of our elementary schools. Parents have the right to request information on the professional qualifications of their student's classroom teachers. For more information, contact Teaching & Learning Services at 360-563-7257.



Payton Swift – Snohomish High School

Snohomish Community Food Bank

The Snohomish Community Food Bank serves every qualified applicant within the boundaries of the Snohomish School District and is supported solely through donations and community volunteers who solicit, manage and distribute its reserves. Since 1985, local citizens have screened beneficiaries, collected and distributed food, and provided social services on a weekly basis.

- Open for grocery pick-up two days each week—Tuesdays from 3 – 6 p.m. or Fridays from 10 a.m.–1 p.m.
- Requirement: Residency in the Snohomish School District
- Located in front of Ferguson Park, behind the Washington National Guard Armory. Please park between the Fire Station and Ferguson Park, north of the Food Bank.
- For more information, call 360-568-7993

Washington State Report Card

The annual report card is found at the Washington State Report Card page (<http://reportcard.ospi.k12.wa.us>) by choosing the “Search by School” option, entering Snohomish in the search field, and selecting the Snohomish school you are specifically interested in seeing. If you do not have internet access, contact your child’s school office and a hard copy can be provided.

PLUSS

Parent Leaders United for Snohomish Students (PLUSS) is comprised of parent leaders within each school, along with representation by school principals, administrators and other interested parents and community members.

The goal of PLUSS is to connect with each other, share information as it relates to the schools and the district, and work together for a broader understanding of our schools from pre-K through graduation. PLUSS is an information resource —

a comfortable place to try out new ideas, make suggestions, and learn about what’s going on in both important and fun activities.

If you would like to represent your school’s parent group, contact your building principal or group leader. Anyone is welcome to attend. PLUSS meetings are typically held on the second Thursday of each month at 9:30 a.m. at the district’s Resource and Service Center, 1601 Avenue D in Snohomish (unless otherwise noted in the agenda). Learn more at www.sno.wednet.edu/pluss.



Kaylee Peterson – Cathcart Elementary

Operation School Bell

Operation School Bell, sponsored by the Assistance League of Everett, provides clothes to any needy K–9th grade child enrolled in Snohomish County schools. Permission for this service must be granted to school personnel by a parent/guardian. If you need this service or know of someone who does, please contact the child’s school office. A clothing list with the need indicated by the parent/guardian must accompany the child to Operation School Bell.

Student discipline rules

Rules and policies regarding student conduct, discipline and rights are posted on our website at www.sno.wednet.edu/studenthandbook in the Student-Parent/Guardian Handbook. Hard copies are available upon request from all school offices.

Student dress

Preserving a beneficial learning environment and assuring the safety and well-being of all students are primary concerns of the Snohomish School District. Students’ choices in matters of dress should be made in consultation with their parents/guardians. Student dress will only be regulated, when, in the judgment of school administration, there is a reasonable expectation that:

- A health or safety hazard will be presented by the student’s dress or appearance;
- Damage to school property will result from the student’s dress; or
- A material and substantial disruption of the educational process will result from the students’ dress.

For more information about the specifics of student dress (Policy 3224 and Procedure 3224P), see the district website at www.sno.wednet.edu/policiesandprocedures.

Student safety

Firearms and other dangerous weapons (or facsimiles) are not allowed on school property. In accordance with state law, policy states that students found in possession of a firearm on Snohomish School District property will be expelled from school for not less than one year. School officials will notify the student’s parent/guardian and the appropriate law enforcement agency.

Also in compliance with state requirements, our properties are alcohol, drug, and tobacco-free. This policy applies to students, staff and community members.

Harassment, intimidation and bullying policy

The Snohomish School District is committed to a safe and civil educational environment for all students, employees, volunteers and patrons, free from harassment, intimidation or bullying. The district will take prompt, equitable and remedial action within its authority on reports that come to the attention of the district, either formally or informally, and does not tolerate retaliation for such reporting. For more information about policies on harassment, intimidation and bullying (Policy 3207), see the district website at www.sno.wednet.edu/policiesandprocedures. To report complaints, please contact Shawn Stevenson, Deputy Superintendent, at 360-563-7282.



Julianne Shepherd – Totem Falls Elementary

Prohibition of sexual harassment

This Snohomish School District is committed to a positive and productive education free from discrimination, including sexual harassment. This commitment extends to all students, employees and other persons involved in academic, educational, extracurricular, athletic, and other programs or activities of the school, whether that program or activity is in a school facility, on school transportation, or at a class, or school training held elsewhere.

For purposes of district policy, sexual harassment means unwelcome conduct or communication of a sexual nature, including conduct defined in WAC 392-190-056.

Sexual harassment can occur adult to student, student to adult, student to student, adult to adult, or can be carried out by a group of students or adults. Sexual harassment will be investigated even if the alleged harasser is not a part of the school staff or student body. The district prohibits sexual harassment of students by other students, employees or third parties involved in school district activities.

Examples of “sexual harassment” include:

- Acts of sexual violence;
- Unwelcome sexual or gender-directed conduct or communication that interferes with an individual's educational performance or creates an intimidating, hostile, or offensive educational environment;
- Unwelcome sexual advances;
- Unwelcome requests for sexual favors;
- Sexual demands when submission is a stated or

implied condition of obtaining an educational benefit;

- Sexual demands where submission or rejection is a factor in an academic, or other school-related decision affecting a student; or
- Sexual demands where submission or rejection is a factor in a work-related decision affecting an individual.

For more information about the specifics of sexual harassment (Policy 3205, Policy 5011, Procedure 3205P, and Procedure 5011P), see the district website at www.sno.wednet.edu/policiesandprocedures.

Student insurance

Parents/guardians are responsible for providing accident and health insurance coverage for their student(s). Primary or supplemental coverage is available on a voluntary basis through Myers-Stevens and Toohey. Enrollment forms are available in English and Spanish at your school's office. Students participating in interscholastic athletics who do not have adequate personal coverage are strongly encouraged to purchase additional coverage.

Attendance policies

Good attendance at school is very important, and the Snohomish School District encourages all students to be in school every day, except in cases when they are ill or have a personal emergency. In accordance with state law (known as the ‘Becca Bill’), our district has policies which specifically define acceptable absences and the procedures that principals will follow regarding student absences. Please see the School Attendance form at the back of this calendar/handbook for additional information.

A student whose absenteeism exceeds what is acceptable within the guidelines of the policy will lose academic credit. Your child's school will advise you of the district's attendance policy.

Parents/guardians should contact their child's school when he or she will not be in school. After an absence, students should bring a written and signed excuse to the office or teacher when returning to school. Students who will be absent from school for an extended period of time for any reason should make arrangements with their teacher(s) in advance.



*Scarlet Zavaglia –
Centennial Middle School*

Integrated Pest Management

The Snohomish School District uses Integrated Pest Management (IPM) modeled after Environmental Protection Agency recommended guidelines for the control of structural and landscape pests. IPM coordinates the use of non-chemical methods along with all available pest control methods. These include pruning, using disease resistant plants, and the judicious use of chemicals that are deemed the least hazardous to human health and the least damaging to the environment. When chemicals are applied, they are applied by either a commercial applicator or a licensed district employee. Chemicals are also used at our high schools as a part of the horticulture program, and they follow the same guidelines as outlined in our IPM.

A notice will be posted in the school's main office 48 hours prior to the application of any biologic or chemical pesticide. It will provide the reason for application and the name of the product to be used. For individual pre-notification, please call your child's school and ask to be placed on the pesticide pre-notification list. Notification procedures do not apply to emergency applications to school facilities for the control of any pests that pose immediate human health or safety threats (e.g. to control stinging insects).

Asbestos management program

In 1986, the district was required to adhere to the Asbestos Hazard Emergency Response Act (AHERA). Since then, we have continued to inspect any known asbestos every six months, and our custodial/maintenance staff members receive annual training.

Additionally, every three years our facilities are re-inspected by an accredited inspector. AHERA manuals are available at sites where asbestos remains.

Student appointments

Parents and students are encouraged to make medical and dental appointments for non-school hours. When an early dismissal must be made, a note should be presented at the attendance office before school. Elementary parents should come to the office to pick up their child.

Health services

Since the health status of a student bears a direct relationship to the student's ability to benefit from any educational experience, the district is interested in knowing any health problems the student may have. It is important that this information be provided when the school year begins. Our district's health services include vision screening and the development of individual health plans for students with life-threatening conditions or other health concerns that may impact your child while at school.

Student emergencies

In case of serious injury or illness at school, we will call the phone number listed as primary first. If we cannot reach a parent at that number, we will call the next person listed on the student's emergency information. If there is no response at this number, the child will be taken to the hospital. Please fill out the emergency enrollment form completely and accurately. If there is a change of address or phone number at any time during the school year, please inform the school promptly.

Life-threatening health conditions

State law requires that when there is a student with a known life-threatening condition, schools must be prepared for a life-threatening event on the day the student starts school.

If your student has severe allergies/anaphylaxis, diabetes, or asthma, they may be affected by a state law that requires a health care plan be implemented before they attends the first day of school. If your student has been prescribed an EpiPen or other medication for allergies, requires blood sugar testing and/or insulin, or requires medication for asthma, please contact the building nurse to write your student's health care plan. Not all elementary schools have a full-time nurse. Elementary students requiring nursing supervision may be asked to attend an elementary school staffed with a full-time nurse.



Brenna Klassen – Glacier Peak High School

Title IX, anti-discrimination statement

The Snohomish School District does not discriminate in any programs or activities on the basis of sex, race, creed, religion, color, national origin, age, veteran or military status, sexual orientation, gender expression or identity, disability, or the use of a trained dog guide or service animal and provides equal access to the Boy Scouts and other designated youth groups.

The following employees have been designated to handle questions and complaints of alleged discrimination:

Civil Rights Coordinator, Title IX Coordinator and ADA

Darryl Pernat
1601 Avenue D
Snohomish, WA 98290
360-563-7285
darryl.ernat@sno.wednet.edu

Section 504 Coordinator and Harassment, Intimidation and Bullying (HIB)

Shawn Stevenson
1601 Avenue D
Snohomish, WA 98290
360-563-7282
shawn.stevenson@sno.wednet.edu

Medication at school

Washington state law allows school employees to administer oral medication and to administer epinephrine by injection for a life-threatening condition when certain requirements have been met. Please note that non-medically trained personnel may administer medication to your child. If your child requires eye, ear, nose drops or topical medication,

please check with the registered nurse at the school to see if that need can be accommodated.

When your child needs to take medication during school hours, the medication must be brought to the school in the original pharmacy container. The label should state the child's name, date of prescription, name of physician, name of drug, route of administration and when to take it.

We must have a written, unexpired request from the parent/guardian along with a written, unexpired prescription from a licensed professional to administer the medication; these must be accompanied with instructions. The medication and necessary paperwork should be reviewed by the school nurse. "Medication" means all drugs, whether prescription or over-the-counter.

Medication forms must also be completed for all medication students will have in their possession. This includes medications needed for field trips and all after-school activities, including athletic and non-athletic extra-curricular activities. Medication forms are available at your school or you can download them from the district website at www.sno.wednet.edu/healthservices.

Immunizations

The amended School Immunization Law requires that a completed Certificate of Immunization form be present at school on or before your child's first day of attendance. The Certificate of Immunization form (CIS) must show proof of full immunization or initiation of a schedule of immunization. Parents electing to exempt their child from immunizations must complete a Certificate of Exemption (COE). Effective July 22, 2011, the COE must include the signature of a licensed health care provider. If a parent completes the COE and an outbreak of a vaccine preventable disease for which the child is exempt occurs, the child may be excluded from

school for the duration of the outbreak by order of the Public Health Officer. You can download the CIS and COE forms on the district website, or get a copy from your health care provider's office or the health department.



*Sofie Goodrum –
Central Emerson Elementary (Central Campus)*

Required vaccines for children entering school

The following are the minimum vaccines required for attendance in the school year 2023–2024, according to the State of Washington (WAC 246–100–166):

- **Diphtheria, Tetanus, Pertussis (DTaP/DT/Td/Tdap):** Five doses of Pertussis containing vaccine are required for school attendance. Four doses of DTaP are required for entry into kindergarten provided the last dose is given on or after the 4th birthday. An additional booster of one dose Tdap is required for entry of 6th–12th grade or when student is 10 years old.
- **Polio:** Four doses. Three doses if the last dose is given on or after the 4th birthday.
- **Measles, Mumps, Rubella* (MMR):** Two doses.
- **Hepatitis B:** At least three doses completed prior to the first day of school.
- **Varicella* (Chicken Pox):** Two doses required for entry of kindergarten–12th grade or healthcare provider verifies child had the disease.

* MMRV (MMR and Varicella) may be used instead of separate MMR and Varicella vaccines. Note: Month, day and year are required documentation of all vaccines. For more information, please visit www.doh.wa.gov/communityandenvironment/schools

Freya Durbin – Cascade View Elementary



Vaccines required for school attendance Grades K–12, August 1, 2023 – July 31, 2024

Vaccine	Kindergarten – 3rd Grade	4th–6th Grade	7th Grade	8th–12th Grade
Hepatitis B	3 doses Dose 3 must be given on or after 24 weeks of age			3 doses Dose 3 must be given on or after 4 months of age
Diphtheria, Tetanus, and Pertussis (DTaP/DT/Td/Tdap)	5 doses (4 doses only IF 4th dose given on or after 4th birthday) PLUS 1 dose Tdap required for 6th–12th grade AND on or after 11 years of age			
Polio (IPV or OPV)	4 doses (3 doses only IF 3rd dose given on or after 4th birthday) The final dose given on or after August 7, 2009, must be given on or after 4 years of age AND a minimum interval of 6 months from the previous dose.	4 doses (3 doses only IF 3rd dose given on or after 4th birthday)		
Measles, Mumps, and Rubella	2 doses			
Varicella	2 doses OR healthcare provider verifies disease			

Review the Individual Vaccine Requirements Summary for more detailed information:
www.doh.wa.gov/CommunityandEnvironment/Schools/Immunization

Education Rights of Homeless Children and Youth

(McKinney-Vento Homeless Assistance Act)

The McKinney-Vento Act defines homeless children as “individuals who lack a fixed, regular and adequate nighttime residence.” The act provides examples of children who would fall under this definition:

- Children and youth sharing housing due to loss of housing, economic hardship or a similar reason.
- Children and youth living in “motels, hotels, trailer parks, or camp grounds due to lack of alternative accommodations.”
- Children and youth living in “emergency or transitional shelters.”
- Children and youth abandoned in hospitals.
- Children and youth whose primary nighttime residence is not ordinarily used as a regular sleeping accommodation (e.g., park benches, etc.).
- Children and youth living in “cars, parks, public spaces, abandoned buildings, substandard housing, bus or train stations.”
- Migratory children and youth living in any of the above situations.
- The McKinney-Vento Act ensures homeless children transportation to and from school free of charge, allowing children to attend their school of origin (last school enrolled or the school they attended when they first become homeless) regardless of what district the family resides in. It requires schools to register homeless children even if they lack normally required documents, such as immunization

records or proof of residence.

Homeless families’ rights

- You have the right to register your child for school even if you do not have your full documentation such as immunization records, utility bill, birth certificate, etc.
- Once registered, your child can begin attending school within one or two days.
- Your child has the right to stay in the same school even if you move, if it is feasible and in the best interests of him or her.
- Your child will be provided with school transportation with school buses, city bus passes or taxi cabs.
- Your children are entitled to free lunch and breakfast at school without the need to fill out the form.
- Your child must not be isolated or stigmatized.
- The above services will continue until the end of the school year in which homelessness ends for your family.

Dispute resolution process

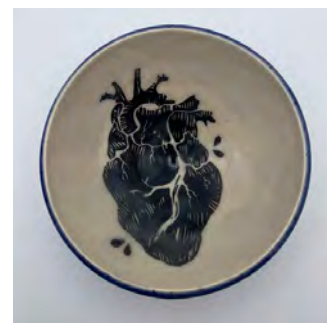
The McKinney-Vento Homeless Assistance Act acknowledges that disputes may arise between the school district and homeless students and their parents, or unaccompanied youth, when the district seeks to place a student in a school other than the school of origin or the school requested by the parent or unaccompanied youth. The Washington State Office of Superintendent of Public Instruction has developed a dispute resolution process as required by the McKinney-Vento Act. Disputes related to school selection or enrollment should be initiated at the request of the parent or unaccompanied youth and not at the request of the school district.

Rights and resolutions

Students who live in transitional situations have the right to:

- Stay in their school even if they move out of the school district. Students can also finish the current school year in their school even if they find permanent housing during that school year.
- Immediately enroll, attend classes and participate fully in school activities in the local school in the area where they are living, without proof of residency, immunization records or other medical records, school records, or other documents.
- The elimination of barriers for a student’s full participation in school and school related activities (i.e. school fees, required supplies).
- Get transportation to their “school of origin” provided or arranged by the school district, or a joint effort between school districts.
- Attend school district provided preschool programs.
- Access all school services including free school meals, services for English language learners, special education, Title I services, vocational/technical education, gifted and talented services, and before- and after-school care/programs as needed.
- Have disagreements with the school settled quickly and go to the school they choose while disagreements are settled. Washington State has a uniform policy and procedure for dispute resolution.
- A free Child Find evaluation to assess developmental status.

For assistance or more information, please contact Teaching & Learning Services at 360-563-7257.



Emma Fontenot –
Snohomish High School

Skykomish Valley Indian Education

Founded in 1980, Skykomish Valley Indian Education is a federally funded program that serves students of Native American/Alaska Native descent in preschool through high school in the Monroe, Snohomish and Sultan public schools.

The no-cost program provides academic support and cultural activities such as the annual Heritage Day and Pow Wow. Families have also formed a nonprofit group to guide and support the program. For more information contact the program Family Liaison-Coordinator, Mars Miller, at 360-804-3353 or millerm@monroe.wednet.edu.

Information is also posted under Student Services on the Monroe Public Schools website at www.monroe.wednet.edu.

Swim for Life

Swim for Life, a nonprofit organization, was formed by local Snohomish community members who have a passion for enriching the lives of young people in our community. The group is dedicated to providing swimming lessons and water safety services to children regardless of their ability to pay. Swim for Life offers every 2nd grader enrolled in the Snohomish School District a free session of swim lessons at the Snohomish Aquatic Center for the 2023-2024 school year. This community program is funded through generous donations raised by Swim for Life. Learn more at www.sno.wednet.edu/2ndgradeswim.



Watson Stilwell – Snohomish High School

Speak Up!

When tasked with planning an assembly at one of our schools honoring Dr. Martin Luther King Jr., the student leadership team adopted the theme, “I have decided to stick with love. Hate is too great a burden to bear.” We reflect on this considering what could be seen as acceptance of hate, humiliation, and violence whether targeted or generalized in social media, mass media, throughout society and even within our communities.

Rather than focus on or highlight hate, we would like to take this opportunity to look at how we can continue to move forward and work to be better with one another. We can start with increasing our awareness of hate speech and engage in conversations around how to address it and support those impacted by it. To be clear, hate negatively impacts everyone.

Hate speech is identified as language or action meant to vilify, humiliate, dehumanize, or insult a person, group, or organization based on race, ethnicity, sexual orientation, ability/disability, or religion. Included are some tips and strategies for positive support and intervention when we witness or are aware of hateful/

humiliating attitudes, speech, or interactions. Some strategies for intervention include:

Interrupt (speech, action, social media posts)

- Every biased remark
- Every time
- In the moment
- Without exception

Question (seek to understand and be understood)

- What was said
- Why it was said
- How to address (participant/recipient)

Educate (yourself and others)

- Explain why it is offensive
- Encourage a different choice

Echo (do not allow someone to speak up alone)

- Recognize others who speak up/speak out
- Reiterate bias awareness and anti-discrimination

If you or someone you know is being targeted by hateful, harmful, or humiliating speech/actions, please reach out to a trusted adult. Similarly, if you know of someone engaging in hateful, harmful, or humiliating speech/actions, please contact a trusted adult. Please contact your school principal or our Equity and Inclusion department at 360-563-7260 if you have any questions or would like more information.



Jaxon Rabe – Cathcart Elementary

Paisley Ciucci – Parent Partnership Program



Notes



Jakoby Fawcett – Central Emerson Elementary (Emerson Campus)

Notes



Eva Pearson – Machias Elementary

Notes



Paisley Marsula –
Central Emerson Elementary (Emerson Campus)



Notes



*Addison Shivers –
Centennial Middle School*

Join us for fun at the Snohomish Aquatic Center!

This facility has everything aquatic under one roof – swim lessons, recreational swim, surfing, diving, water play, competitive swim and water fitness classes. We are also the home of the Glacier Peak High School and Snohomish High School boys' and girls' swim and dive teams.

The 52,000-square-foot Snohomish Aquatic Center is located at 516 Maple Avenue in Snohomish. The facility's competition pool has its own natatorium to provide functional and acoustic separation from the recreation pool. The competition pool (6,163 square feet) and recreation pool (5,091 square feet) function independently of the activities that occur in the other areas.

Hours

Visit our website at www.snohomishaquatic.com for fees, schedules and pool-specific open and close times. We can also be reached at 360-568-8030 or find us on Facebook.

Program registration

To register for aquatic programming and lessons visit www.sno.wednet.edu/aquaticregistration. Questions or concerns with the system can be directed to 360-568-8030 (hit 7 to talk with a guest services representative).

Features, amenities and programs

- Recreation pool
- 10-lane competition pool
- FlowRider surf-simulation machine
- Dive area
- U.S. Masters Swimming
- Swim, dive and surf lessons/stroke clinics
- Open/recreation swimming
- Open surf
- Swim competitions
- Parent/tot programming
- Water fitness
- Open lap swim
- Family swim
- Hot tub
- Spray play/zero-entry area
- Lazy river
- Splashtacular waterslide
- Locker rooms
- Family changing area
- Party rooms



*Trinity Hollimon –
Glacier Peak High School*

Contact information

Resource and Service Center

(District Office)
1601 Avenue D
Snohomish, WA 98290
360-563-7300 (main)

Superintendent

Kent Kultgen, Ed.D.
360-563-7280

Deputy Superintendent

Shawn Stevenson
360-563-7282

Teaching & Learning Services

Monica Bauer
Executive Director
360-563-7257

Special Education Services

Wendy McCulloch
Executive Director
360-563-7308

Business Services

Tom Laufmann
Executive Director
360-563-7240

Communications

Kristin Foley
Director
360-563-7263

Equity and Inclusion

Wil Johnson
Director
360-563-7260

Food Services

Marty Grasa
Manager
360-563-7357

Human Resource Services

Darryl Pernat
Executive Director
360-563-7285

Operations

Dave Sage
Executive Director
360-563-7230

Career and Technical Education (CTE)

Brian Burdon
Director
360-563-7317

Technology

Edson Rodriguez
Director
360-563-7273

Transportation

Veronica Schmidt
Director
360-563-3525

High schools, middle schools and alternative programs

AIM High School

Doug Plucker, Principal
525 13th Street
Snohomish, WA 98290
360-563-3400 (main)
360-563-3401 (registrar)
www.sno.wednet.edu/aim

Glacier Peak High School

Brenda Conrad, Principal
7401 144th Place SE
Snohomish, WA 98296
360-563-7500 (main)
360-563-7505 (attendance)
www.sno.wednet.edu/gphs

Snohomish High School

Nate DuChesne, Principal
1316 Fifth Street
Snohomish, WA 98290
360-563-4000 (main)
360-563-4005 (attendance)
www.sno.wednet.edu/shs

Centennial Middle School

Josh Rosenbach, Principal
3000 South Machias Road
Snohomish, WA 98290
360-563-4525 (main)
360-563-4534 (attendance)
www.sno.wednet.edu/cms



Kinzi Crealock – Dutch Hill Elementary

Valley View Middle School

Eric Cahan, Principal
14308 Broadway Avenue SE
Snohomish, WA 98296
360-563-4225 (main)
360-563-4227 (attendance)
www.sno.wednet.edu/vvms

Parent Partnership Program

Doug Plucker, Principal
525 13th Street
Snohomish, WA 98290
360-563-3423 (main)
www.sno.wednet.edu/ppp

Elementary schools

Cascade View Elementary

Ryan Painter, Principal
2401 Park Avenue
Snohomish, WA 98290
360-563-7000 (main)
360-563-7070 (attendance)
www.sno.wednet.edu/cascadeview

Cathcart Elementary

Mike Anderson, Principal
8201 188th Street SE
Snohomish, WA 98296
360-563-7075 (main)
360-563-7126 (attendance)
www.sno.wednet.edu/cathcart

Central Emerson Elementary Central Campus (Grades K-1)

Sam Hanson, Principal
221 Union Avenue
Snohomish, WA 98290
360-563-4600 (main)
360-563-7156 (attendance)
www.sno.wednet.edu/centralemerson

Central Emerson Elementary Emerson Campus (Grades 2-6)

Sam Hanson, Principal
1103 Pine Avenue
Snohomish, WA 98290
360-563-7150 (main)
360-563-7156 (attendance)
www.sno.wednet.edu/centralemerson

Dutch Hill Elementary

Cory Taylor, Principal
8231 131st Avenue SE
Snohomish, WA 98290
360-563-4450 (main)
360-563-4450 (attendance)
www.sno.wednet.edu/dutchhill

Little Cedars Elementary

Anne Nielsen, Principal
7408 144th Place SE
Snohomish, WA 98296
360-563-2900 (main)
360-563-2920 (attendance)
www.sno.wednet.edu/littlecedars

Machias Elementary

Shawn Ryan, Principal
231 147th Avenue SE
Snohomish, WA 98290
360-563-4825 (main)
360-563-4888 (attendance)
www.sno.wednet.edu/machias

Riverview Elementary

Derek Larsen, Principal
7322 64th Street SE
Snohomish, WA 98290
360-563-4375 (main)
360-563-4375 (attendance)
www.sno.wednet.edu/riverview

Seattle Hill Elementary

Mica Harasek, Principal
12711 51st Avenue SE
Everett, WA 98208
360-563-4675 (main)
360-563-4683 (attendance)
www.sno.wednet.edu/seattlehill

Totem Falls Elementary

Sarah Schmied, Principal
14211 Sno-Cascade Drive
Snohomish, WA 98296
360-563-4750 (main)
360-563-4751 (attendance)
www.sno.wednet.edu/totemfalls

ECEAP Preschool

Britta Grass, Supervisor
at Central Emerson Elementary
(Central Campus)
221 Union Avenue
Snohomish, WA 98290
360-563-4641 (main)
www.sno.wednet.edu/eceap



Macilyn Erickson – Riverview Elementary

2023–2024 start/dismissal times

Regular school schedule (Monday – Thursday)

Elementary	Start	End
Cascade View	8:35 a.m.	3:15 p.m.
Cathcart	8:35 a.m.	3:15 p.m.
Central Emerson (Central Campus)	8:20 a.m.	3 p.m.
Central Emerson (Emerson Campus)	8:35 a.m.	3:15 p.m.
Dutch Hill	8:35 a.m.	3:15 p.m.
Little Cedars	8:10 a.m.	2:50 p.m.
Machias	8:35 a.m.	3:15 p.m.
Riverview	8:35 a.m.	3:15 p.m.
Seattle Hill	8:35 a.m.	3:15 p.m.
Totem Falls	8:35 a.m.	3:15 p.m.
Middle School	Start	End
Centennial	7:30 a.m.	2:10 p.m.
Valley View	7:30 a.m.	2:10 p.m.
High School	Start	End
Glacier Peak	7:30 a.m.	2:12 p.m.
Snohomish	7:30 a.m.	2:12 p.m.
AIM:		
Morning session	8 a.m.	11 a.m.
Afternoon session	11:30 a.m.	2:30 p.m.
Re-Entry (Tuesday/Thursday)	3 p.m.	5 p.m.
Alternative	Start	End
Parent Partnership Program – Elementary	Contact school for specific grade-level start and end times.	
Parent Partnership Program: Tuesdays and Thursdays – Secondary	9 a.m.	2:25 p.m.

Professional Growth Friday schedule

Elementary	Start	End
Cascade View	8:35 a.m.	1:15 p.m.
Cathcart	8:35 a.m.	1:15 p.m.
Central Emerson (Central Campus)	8:20 a.m.	1 p.m.
Central Emerson (Emerson Campus)	8:35 a.m.	1:15 p.m.
Dutch Hill	8:35 a.m.	1:15 p.m.
Little Cedars	8:10 a.m.	12:50 p.m.
Machias	8:35 a.m.	1:15 p.m.
Riverview	8:35 a.m.	1:15 p.m.
Seattle Hill	8:35 a.m.	1:15 p.m.
Totem Falls	8:35 a.m.	1:15 p.m.
Middle School	Start	End
Centennial	7:30 a.m.	12:10 p.m.
Valley View	7:30 a.m.	12:10 p.m.
High School	Start	End
Glacier Peak	7:30 a.m.	12:12 p.m.
Snohomish	7:30 a.m.	12:12 p.m.
AIM: Fridays	8 a.m.	Noon
Alternative	Start	End
Parent Partnership Program – Elementary and Secondary	9 a.m.	1 p.m.

Half-day early dismissal schedule

Elementary	Start	End
Cascade View	8:35 a.m.	11:45 a.m.
Cathcart	8:35 a.m.	11:45 a.m.
Central Emerson (Central Campus)	8:20 a.m.	11:30 a.m.
Central Emerson (Emerson Campus)	8:35 a.m.	11:45 a.m.
Dutch Hill	8:35 a.m.	11:45 a.m.
Little Cedars	8:10 a.m.	11:20 a.m.
Machias	8:35 a.m.	11:45 a.m.
Riverview	8:35 a.m.	11:45 a.m.
Seattle Hill	8:35 a.m.	11:45 a.m.
Totem Falls	8:35 a.m.	11:45 a.m.
Middle School	Start	End
Centennial	7:30 a.m.	10:30 a.m.
Valley View	7:30 a.m.	10:30 a.m.
High School	Start	End
Glacier Peak	7:30 a.m.	10:30 a.m.
Snohomish	7:30 a.m.	10:30 a.m.
AIM	8 a.m.	11 a.m.
Alternative	Start	End
Parent Partnership Program	Contact school for specific grade-level start and end times.	

School office hours

Please check the individual school websites or the district website at www.sno.wednet.edu for details regarding our school office hours.



1601 Avenue D, Snohomish, WA 98290

Student Housing

QUESTIONNAIRE

The answers to the following questions can help determine the services this student may be eligible to receive under the McKinney-Vento Act 42 U.S.C. 11435. The McKinney-Vento Act provides services and supports for children and youth experiencing homelessness. (Please see reverse side for more information.)

If you own/rent your own home, you do not need to complete this form (unless there are inadequate facilities, i.e. no water, heat, electricity, etc.).

If you do not own/rent your own home, please check all that apply below.

(Submit to District Homeless Liaison. Contact information can be found at the bottom of the page).

- | | |
|--|---|
| <input type="checkbox"/> In a motel | <input type="checkbox"/> A car, park, campsite, or similar location |
| <input type="checkbox"/> In a shelter | <input type="checkbox"/> Transitional housing |
| <input type="checkbox"/> Moving from place to place/couch surfing | <input type="checkbox"/> Other |
| <input type="checkbox"/> In someone else's house or apartment with another family | |
| <input type="checkbox"/> In a residence with inadequate facilities (no water, heat, electricity, etc.) | |

Name of Student: _____
First Middle Last

Name of School: _____ Grade: _____ Birthdate: _____ Age: _____ Gender: _____
(Month/Day/Year)

- ☐ Student is unaccompanied (not living with a parent or legal guardian) ☐ Student is living with a parent or legal guardian

Address or current residence: _____

Phone number or contact number: _____ Name of contact: _____

Print name of parent(s)/legal guardian(s): _____
(Or unaccompanied youth)

*Signature of parent/legal guardian: _____ Date: _____
(Or unaccompanied youth)

*I declare under penalty of perjury under the laws of the State of Washington that the information provided here is true and correct.

PLEASE RETURN COMPLETED FORM TO:

District Liaison: **Nina Hoffar**

Phone Number: **360-563-7284**

Location: **Resource and Service Center**

FOR SCHOOL PERSONNEL ONLY: For data collection purposes and student information system coding

- ☐ (N) Not Homeless ☐ (A) Shelters ☐ (B) Doubled-Up ☐ (C) Unsheltered ☐ (D) Hotels/Motels

MCKINNEY-VENTO ACT 42 U.S.C. 11435

SEC. 725. DEFINITIONS.

For purposes of this subtitle:

- (1) The terms “enroll and enrollment” include attending classes and participating fully in school activities.
- (2) The term “homeless children and youths” —
 - (A) means individuals who lack a fixed, regular, and adequate nighttime residence (within the meaning of section 103(a)(1)); and
 - (B) includes —
 - (i) children and youths who are sharing the housing of other persons due to loss of housing, economic hardship, or a similar reason; are living in motels, hotels, trailer parks, or camping grounds due to the lack of alternative adequate accommodations; are living in emergency or transitional shelters; are abandoned in hospitals;
 - (ii) children and youths who have a primary nighttime residence that is a public or private place not designed for or ordinarily used as a regular sleeping accommodation for human beings (within the meaning of section 103(a)(2)(C));
 - (iii) children and youths who are living in cars, parks, public spaces, abandoned buildings, substandard housing, bus or train stations, or similar settings; and
 - (iv) migratory children (as such term is defined in section 1309 of the Elementary and Secondary Education Act of 1965) who qualify as homeless for the purposes of this subtitle because the children are living in circumstances described in clauses (i) through (iii).
- (6) The term “unaccompanied youth” includes a youth not in the physical custody of a parent or guardian.

ADDITIONAL RESOURCES

Information and resources can be found at the following:

- National Center for Homeless Education - <https://nche.ed.gov>
- National Association for the Education of Homeless Children and Youth (NAEHYC) - <https://naehcy.org/resources>
- SchoolHouse Connection - <https://www.schoolhouseconnection.org>



SNOHOMISH
SCHOOL
DISTRICT

1601 Avenue D, Snohomish, WA 98290

CUESTIONARIO SOBRE LA

Vivienda del estudiante

Las respuestas a las siguientes preguntas pueden ayudar a determinar los servicios que este estudiante podrá ser elegible a recibir bajo la ley McKinney-Vento 42 U.S.C. 11435. Esta ley les proporciona servicios y apoyos a los niños y jóvenes que estén experimentando desamparo (Favor de ver el dorso para más información).

Si Ud. es propietario/a de casa o alquila su propio hogar, no necesita completar este formulario (a menos que hay servicios inadecuados, por ejemplo no agua, calefacción, etc.).

Si no es propietario/a de casa ni alquila su propio hogar, favor de marcar todas las respuestas que se apliquen abajo.
(Entregue esta forma a la Coordinadora del programa para desamparados en el distrito. Se encontrará la información de contacto al pie de la página).

- | | |
|---|--|
| <input type="checkbox"/> En un motel | <input type="checkbox"/> En un auto, parque, campamento o lugar parecido |
| <input type="checkbox"/> En un albergue | <input type="checkbox"/> En una vivienda transicional |
| <input type="checkbox"/> Se trasladan de un lugar a otro/Duermen en las sofás de otras personas | <input type="checkbox"/> Otro |
| <input type="checkbox"/> En casa ajena o en un departamento con otra familia | |
| <input type="checkbox"/> En un residencia con instalaciones insuficientes (sin agua, calefacción, electricidad, etcétera) | |

Nombre (s) y apellido(s) del estudiante: _____
Primer nombre Segundo nombre Apellido(s)

Nombre de escuela: _____ Grado: _____ Fecha de nacimiento: _____ Edad: _____ Género: _____
(Mes/Día/Año)

☐ El estudiante no está acompañado (no vive con ninguno de los padres ni con el tutor legal) ☐ El estudiante vive con uno de los padres o con el tutor legal

Domicilio o residencia actual: _____

Número telefónico o número de contacto: _____ Nombre y apellido(s) del contacto: _____

Imprima el nombre y el (los) apellido(s) de los padre(s)/tutor(es) legales: _____
(O la firma del/de la joven no acompañado/a)

*Firma del padre/de la madre/del tutor legal: _____ Fecha: _____
(O la firma del/de la joven no acompañado/a)

*Declaro bajo pena de perjurio bajo las leyes del Estado de Washington que la información proporcionada aquí es verdadera y correcta.

FAVOR DE ENTREGAR LA FORMA DILIGENCIADA AL:

Contacto del distrito: **Nina Hoffer**

Número: **360-563-7284**

Lugar: **Centro de recursos y servicios**

SÓLAMENTE PARA EL PERSONAL ESCOLAR: Para los fines de recopilar los datos y la clasificación en el sistema de información estudiantil

☐ (N) No desamparado/a ☐ (A) En un albergue ☐ (B) Hogar compartido ☐ (C) Sin albergue ☐ (D) Hoteles/Moteles

LA LEY MCKINNEY-VENTO 42. U.S.C. 11435

SEC 725. DEFINICIONES.

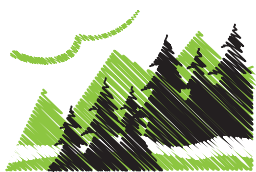
Para los fines de este apartado:

- (1) Los términos "inscribir y inscripción" incluyen asistir a clases y participar plenamente en las actividades escolares.
- (2) El termino "niños y jóvenes desamparados" —
 - (A) significa los individuos que carecen de una residencia nocturna fija, habitual y adecuada (dentro del sentido de la sección 103 (a)(1)); y
 - (B) incluye a —
 - (i) los niños y jóvenes que comparten la vivienda de otras personas debida a la perdida del alojamiento, a la dificultad económica o a un motivo similar; los que viven en moteles, hoteles, parques de campamento remolque o campamentos debida a la falta de viviendas alternativas suficientes; los que están viviendo en albergues de emergencia o transicionales; los que han sido abandonados en hospitales;
 - (ii) los niños y jóvenes que tienen una residencia nocturna principal en un lugar público o privado que no esté diseñada ni usada típicamente para alojamiento habitual para seres humanos (dentro del sentido de la sección 103(a)(2)(c);
 - (iii) los niños y jóvenes que viven en automóviles, parques, espacios públicos, edificios abandonados, viviendas de condiciones subestándares, estaciones de autobús o de tren, o entornos similares; y
 - (iv) los niños migrantes (tal como dicho término se define en la sección 1308 de la Ley de Educación Primaria y Secundaria de 1965) que califican como personas desamparadas para los fines de este apartado porque viven en las circunstancias descritas en las cláusulas (i) hasta (iii).
- (3) El término "joven no acompañado/a" incluye a cualquier/a joven que no esté bajo la custodia física de un padre ni de un tutor.

RECURSOS ADICIONALES

A lo siguiente se puede encontrar información y recursos:

- **El centro nacional de educación para desamparados** - <https://nche.ed.gov>
(National Center for Homeless Education, en inglés)
- **La asociación nacional para la educación de niños y jóvenes desamparados** - <https://naehcy.org/resources>
(National Association for the Education of Homeless Children and Youth/NAEH CY, en inglés)
- **Conexión escuela** - <https://www.schoolhouseconnection.org>
(SchoolHouse Connection, en inglés)



School attendance form

School attendance is required by state law.

- State law requires children from age 8 to 17 to attend school.
- Children that are 6- or 7-years-old, who are enrolled in school, must also attend school.
- Youth who are 16 or older may be excused from attending school if they meet certain requirements per state law (RCW 28A.225.010).
- If your child is going to be absent, please contact the school office.

School's duties upon a student's absences:

- If your child has three unexcused absences in one month, state law (RCW 28A.225.020) requires we schedule a conference with you and your child.
- In elementary school after five excused absences in any month, or ten or more excused absences in the school year, the school district is required to contact you to schedule a conference. A conference is not required if your child has provided a doctor's note, or pre-arranged the absence in writing, and plans are in place so your child does not fall behind academically.
- If your child has seven unexcused absences in any month or 15 unexcused absences within the school year, we are required to file a petition with the juvenile court, alleging a violation of RCW 28A.225.010, the mandatory attendance laws. You and your child may need to appear in juvenile court.

Did you know?

- Attending school on-time, all day, every day will give your child the best chance of graduating from high school.
- Starting in kindergarten, missing on average just two days a month, whether excused or unexcused, makes it more likely that your child will not meet academic standards in math and reading by third grade.

- By 6th grade, absenteeism is one of three signs that a student may drop out of high school.
- Absences can be a sign that a student is losing interest in school, struggling with school work, dealing with a bully or facing some other potentially serious difficulty.
- By 9th grade, regular attendance is a better predictor of high school graduation rates than 8th grade test scores.

What you can do:

- Don't let your child stay home unless they are truly sick, such as fever, vomiting, diarrhea, or a contagious rash.
- Avoid appointments and travel when school is in session.
- Keep track of your child's attendance. Missing more than nine days, excused or unexcused, could put your child at risk of falling behind.
- Set a regular bedtime and morning routine as well as finishing homework and packing backpacks the night before.
- Have a back-up plan in place with family members, neighbors, or other parents for getting your child to school in case something comes up.

If you are struggling to get your child to school for any reason, we are here to support you and work with you towards possible solutions. Please do not hesitate to contact the school office to schedule an appointment to discuss your child's attendance.

I acknowledge that I have read (or I have had someone read this to me) and I understand this document.

Student Name: _____
First Middle Last

Date of Birth: _____ Age: _____ Grade: _____ Name of School: _____

Current Address: _____
Street City Zip

Phone/Contact Number: _____

Do you have other children that attend a school in the Snohomish School District?

Name: _____ Date of Birth: _____ Age: _____ Grade: _____ School: _____

Name: _____ Date of Birth: _____ Age: _____ Grade: _____ School: _____

Name: _____ Date of Birth: _____ Age: _____ Grade: _____ School: _____

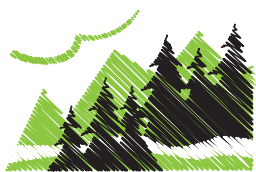
*I declare under penalty of perjury under the laws of the State of Washington
that the information provided here is true and accurate.*

Print name of person completing form: _____

Signature: _____ **Date:** _____

Relationship to student(s): ☐ Parent ☐ Guardian ☐ Self ☐ Other _____

Please read and complete this form and return to your child's school office by the end of September.



Asistencia a la escuela el formulario

La ley estatal requiere la asistencia a la escuela.

- La ley estatal requiere que los niños de las edades de 8 a 17 asistan a la escuela.
- Los niños que tienen 6 o 7 años, que están inscritos en una escuela, también tienen que asistir a la escuela.
- Los jóvenes que tienen 16 o más pueden estar disculpados de asistir a la escuela si cumplen con ciertos requisitos según la ley estatal (RCW 28A.225.010).
- Si su hijo va a estar ausente, favor de ponerse en contacto con la oficina de la escuela.

Los deberes de la escuela cuando está ausente un estudiante:

- Si su hijo/a tiene tres ausencias sin excusa en un mes, la ley estatal (RCW 28A.225.020) requiere que fijemos una conferencia con usted y su hijo/a.
- En la escuela primaria después de cinco ausencias con excusa en un mes, o diez o más ausencias con excusa en el año escolar, se requiere que el distrito escolar se ponga en contacto con usted para fijar una conferencia. No se requiere una conferencia si su hijo/a ha surtido un recado del doctor, o arreglado de antemano la ausencia por escrito, y se han hecho planes para que su hijo/a no se atrase académicamente.
- Si su hijo/a tiene siete ausencias sin excusa en un mes o 15 ausencias sin excusa durante el año escolar, se nos requiere que presentemos una petición con la corte Juvenil, alegando una violación de RCW 28A.225.010, las leyes de asistencia requerida. Usted y su hijo/a necesite presentarse en la corte juvenil.

¿Sabías?

- El asistir a la escuela a tiempo, todo el día, todos los días dará a su hijo/a la mejor oportunidad de graduarse de la preparatoria.
- Empezando en el kindergarten, faltar un promedio de solamente dos días al mes, con excusa o sin excusa, hace más probable que su hijo/a no alcance los estándares académicos en matemática y lectura al llegar al tercer grado.
- Al grado 6, el estar ausente es una de tres señas que un estudiante abandone sus estudios de la preparatoria.
- Las ausencias pueden ser una seña que un estudiante esté perdiendo el interés por la escuela, batalle con las tareas, que alguien le esté acosando, o que esté enfrentando a otra dificultad potencialmente seria.
- Al noveno grado, la asistencia regular es un mejor pronóstico de la tasa de graduación de la preparatoria que las calificaciones de los exámenes del octavo grado.

Lo que usted puede hacer:

- No deje que su hijo/a quede en casa a menos que está realmente enfermo, como con fiebre, vomito, diarrea o una roncha contagiosa.

Evite citas y viajes durante días de escuela.

- Manténgase al corriente de la asistencia de su hijo/a. Faltar más que nueve días, con excusa o sin excusa, puede poner a su hijo/a en riesgo de atrasarse.
- Establece una rutina regular de hora de acostarse y de la mañana junto con terminar la tarea y empacar las mochilas la noche anterior.
- Ten un plan de respaldo hecho con familia, vecinos, u otros padres para que su hijo/a llegue a la casa si ocurre algo.

Si usted está batallando para que su hijo/a llegue a la escuela por cualquier razón, estamos aquí para apoyarle y trabajar con usted hacia posibles resoluciones. No dude en ponerse en contacto con la oficina de la escuela para fijar una cita para platicar de la asistencia de su hijo/a.

Nombre de estudiante: _____
Primer Segundo Apellido

Fecha de nacimiento: _____ Edad: _____ Año: _____ Nombre de la escuela: _____

Dirección actual: _____
Calle Ciudad Código postal

Teléfono/Celular: _____

¿Tiene usted otros hijos que asisten a una escuela en el Distrito escolar de Snohomish?

Nombre: _____ Fecha de nacimiento: _____ Edad: _____ Año: _____ Escuela: _____

Nombre: _____ Fecha de nacimiento: _____ Edad: _____ Año: _____ Escuela: _____

Nombre: _____ Fecha de nacimiento: _____ Edad: _____ Año: _____ Escuela: _____

Yo declaro bajo pena de perjurio de acuerdo con las leyes del estado de Washington que la información dada aquí es verdadera y correcta.

Nombre en imprenta de la persona que llena el formulario: _____

Firma de la persona que llena el formulario: _____ **Fecha:** _____

Parentesco con el/la estudiante(s): ☐ Padre/madre ☐ Tutor dativo ☐ Estudiante ☐ Otro _____

Por favor lee y completa este formulario y regrésalo a la oficina de la escuela de tu estudiante para fines de septiembre.

(Last, First): _____ DOB: _____ ☐ M ☐ F Grade: _____ ID #: _____

Student Name

This information is needed to plan an appropriate program for your student and to prepare for any emergency situation if one should arise. ***Washington state law requires that LIFE-THREATENING CONDITIONS such as ANAPHYLAXIS, DIABETES, SEIZURES or ASTHMA have a health plan completed prior to the first day of school. Please contact the building nurse as soon as possible to ensure all paper work is complete.**

Medical History (check all that apply) or ☐ No health condition at this time (please sign below).

Congenital /Genetic Conditions

AG ☐ Other _____
 AJ ☐ Fetal Alcohol Spectrum Disorder _____

Hematology (Blood)

BB ☐ *Hemophilia _____
 BC ☐ Sickle Cell Anemia _____
 BD ☐ Other Blood Condition _____

Cardiovascular/Heart Conditions

CG ☐ Other _____

Endocrine, Allergy, Immune System, Metabolic, and Nutritional

EB ☐ Other Allergy _____
 ED ☐ Allergy-Food _____
 EE ☐ Allergy-Insect _____
 EG ☐ *Anaphylactic Condition (EpiPen) _____
 EJ ☐ Cystic Fibrosis _____
 EK/L ☐ *Diabetes Type 1 ☐ *Diabetes Type 2
 EM ☐ Allergy to Medication(s) _____
 EN ☐ Eating Disorder _____
 EO ☐ Other Endocrine, Immune, or Metabolic Disorder _____
 EU ☐ Thyroid Disorder _____

Gastrointestinal, Dental, and Oral Conditions

GA/J/K ☐ Celiac Disease ☐ Crohn's ☐ Irritable Bowel
 GD ☐ Dental Condition _____
 GG ☐ Food Intolerance _____
 GH/L ☐ Gastroesophageal Reflux ☐ Lactose Intolerance
 GI ☐ Other _____
 GM ☐ Liver Disease _____
 GN ☐ Oral Condition _____

Musculoskeletal and Connective Tissue

MB ☐ Other _____
 MC ☐ Juvenile Rheumatoid Arthritis _____
 MD ☐ Muscular Dystrophy _____
 MF ☐ Osgood-Schlatter _____
 MH ☐ Scoliosis _____

Skin and Subcutaneous Tissue

SB ☐ Contact Dermatitis (Eczema) _____
 SH ☐ Other _____

Is medication needed at home? ☐ No ☐ Yes Please list: _____

Is medication needed at school? ☐ No ☐ Yes Please list: _____

Hospital preference: _____

Nervous System

☐ ADHD-Inattentive ☐ ADHD-Hyperactive/Impulsive
 NB ☐ ADHD-Combined, Diagnosed by: _____
 NC ☐ Autism Spectrum Disorder _____
 ND ☐ Central Nervous System Condition Other _____
 NE ☐ Cerebral Palsy _____
 NF ☐ Developmental Disability _____
 NH/I/J ☐ Migraines ☐ Headaches ☐ Shunt
 NN ☐ Paralysis _____
 NP ☐ *Seizure Disorder _____
 NQ ☐ Sensory Condition _____
 NS ☐ Spina Bifida _____
 NT ☐ Spinal Cord Injury _____
 NU ☐ Traumatic Brain Injury _____

Behavioral Health Conditions

PA ☐ Anxiety _____
 PC ☐ Depression _____
 PH ☐ Sleep Disorder _____
 PI ☐ Tourette Syndrome _____
 PJ ☐ Other _____

Respiratory

RA ☐ Exercise-Induced Bronchospasm ☐ *Inhaler
 RE ☐ Reactive Airway Disease _____
 RF ☐ Other _____
 RG ☐ *Asthma – current ☐ *Inhaler
 RH ☐ Asthma – ever-diagnosed

Neoplasms (Cancer/Tumors)

TI ☐ Other _____

Renal and Genitourinary

UB ☐ Chronic Urinary Tract Infection _____
 UC ☐ Dysmenorrhea (painful menstrual periods) _____
 UD ☐ Genito-Urinary Condition Other _____
 UH ☐ Renal Condition Other _____

Eye and Ear

YB ☐ Hearing Impaired _____
 YA/YC ☐ Chronic Ear Infections ☐ Ear Condition _____
 YD ☐ Visually Impaired _____
 YE ☐ Eye Condition _____
 YF ☐ Wears Glasses _____ Last Eye Eval: _____

If parent/guardian or authorized emergency contact cannot be reached at the time of a medical emergency, and if immediate care is urgent in the judgment of school authorities, I authorize and direct the school authorities to send the student to the hospital or doctor most accessible. I understand that I will assume full responsibility for the payment of any services rendered. I understand that the information given above will be shared with appropriate school staff that needs to know in order to provide for the health and safety of my student. I give my consent for Snohomish School District staff to obtain and enter vaccine dates and information into the WAIS to maintain my student's immunization record.

Date: _____ Parent/Guardian Signature: _____ Phone: _____

EMERGENCY INFORMATION

Please print student's last name: _____ Bus #: _____

*In order to provide immediate and safe care for your child and carry out your wishes in case of injury or illness at school, we require the following information. Please fill out completely. **Please Print.***

Student Name: _____ DOB: _____ Grad Year: _____
Last First Middle Initial

Home Address: _____ Home Phone: _____
Street City Zip

Lives with: ☐ Parents ☐ Mother only ☐ Mother/Stepfather ☐ Guardian ☐ Father only ☐ Father/Stepmother

Other: _____

Parent/Guardian Name 1: _____ E-mail Address: _____

Employer: _____ Work Phone: _____ Cell Phone: _____

Parent/Guardian Name 1: _____ E-mail Address: _____

Employer: _____ Work Phone: _____ Cell Phone: _____

Primary language spoken at home: ☐ English ☐ Spanish ☐ Other: _____

Day Care Provider (if applicable): _____ Phone: _____

Please complete the following if student has a non-custodial parent who can make emergency decisions for the student and receive copies of records involving this student, including newsletters, grade reports, correspondence, etc.

Home Address: _____ Home Phone: _____
Street City Zip

Parent/Guardian Name 1: _____ E-mail Address: _____

Employer: _____ Work Phone: _____ Cell Phone: _____

Parent/Guardian Name 2: _____ E-mail Address: _____

Employer: _____ Work Phone: _____ Cell Phone: _____

In addition to the parent/guardian, if you cannot be reached, the school may call and release your child to any of the following:

Name 1: _____ Relationship: _____

Phone: _____ Work Phone: _____ Cell Phone: _____

Name 2: _____ Relationship: _____

Phone: _____ Work Phone: _____ Cell Phone: _____

Name 3: _____ Relationship: _____

Phone: _____ Work Phone: _____ Cell Phone: _____

Please list all children in Snohomish School District this year. (Please list students in this school first.)

Last Name	First Name	School	Grade
_____	_____	_____	_____
_____	_____	_____	_____
_____	_____	_____	_____

Signature of Parent or Legal Guardian: _____ Date: _____

Please check here if any information on this form is new. ☐

*****THIS FORM MUST BE RETURNED AT REGISTRATION**

Rev.1/2020

(Apellido/Nombre): _____ Fecha de Nacimiento: _____ ☐ M ☐ F Grade: _____ # de ID: _____

Nombre del Estudiante

Esta información es necesaria para planear un programa apropiado para su estudiante y para estar preparados para cualquier situación de emergencia en caso de que suceda. ***La ley del Estado de Washington requiere que las CONDICIONES DE AMENAZA-A LA VIDA tales como ANAFILAXIA, DIABETES, CONVULSIONES o ASMA tengan un plan de salud completo antes del primer día de escuela. Por favor contacte a la enfermera de la escuela lo antes posible para asegurarse que todos los documentos estén completos.**

Historial Médico (Señale todas las opciones que apliquen) o ☐ No existen preocupaciones de salud en estos momentos (por favor firme al final).

Condiciones congénitas/genéticas

AG ☐ Otros _____
AJ ☐ Trastorno del espectro alcohólico feta _____

Hematología (Sangre)

BB ☐ *Hemofilia _____
BC ☐ Anemia Falciforme _____
BD ☐ Otras condiciones de la Sangre _____

Condiciones cardiovasculares / cardíacas

CG ☐ Otros _____

Endocrino, Alergia, Sistema Inmunológico, Metabólico, y Nutricional

EB ☐ Otras Alergias _____
ED ☐ Alergias de alimentos _____
EE ☐ Alergias de insectos _____
EG ☐ *Condición Anafiláctica (EpiPen) _____
EJ ☐ Fibrosis Quística _____
EK/L ☐ *Diabetes Tipo 1 ☐ *Diabetes Tipo 2
EM ☐ Alergias a Medicamento(s) _____
EN ☐ Trastorno Alimenticia _____
EO ☐ Otro Trastorno Endocrino, Inmune o Metabólico _____
EU ☐ Trastorno de la Tiroides _____

Condiciones Gastrointestinales, Dentales y Orales

GA/J/K ☐ Enfermedad Celíaca ☐ Crohn's ☐ Intestino Irritable
GD ☐ Cnodición Dental _____
GG ☐ Intolerancia a la comida _____
GH/L ☐ Gastroesophageal Reflux ☐ Intolerancia a la Lactosa
GI ☐ Otros _____
GM ☐ Enfermedad del Hígado _____
GN ☐ Condición Oral _____

Tejido musculoesquelético y conectivo

MB ☐ Otros _____
MC ☐ Artritis reumatoide juvenil _____
MD ☐ Distrofia Muscular _____
MF ☐ Osgood-Schlatter _____
MH ☐ Escoliosis _____

Piel y Tejido Subcutáneo

SB ☐ Detmatitis de Contacto(Eccema) _____
SH ☐ Otros _____

Sistema Nervioso

☐ ADHD-Inatento ☐ ADHD-Hperactividad/Impulsividad
NB ☐ ADHD-Combinado, Diagnosticado el día _____
NC ☐ Desorden del Espectro Autismo _____
ND ☐ Condición del sistema nervioso central Otro _____
NE ☐ Parálisis Cerebral _____
NF ☐ La discapacidad del desarrollo _____
NH/I/J ☐ Migrañas ☐ Dolores de Cabeza ☐ Derivación
NN ☐ Parálisis _____
NP ☐ *Transtorno Convulsivo _____
NQ ☐ Cnodición Sensorial _____
NS ☐ Espina Bífidaa _____
NT ☐ Lesión de la Médula Espinal _____
NU ☐ Lesión Cerebral Traumática _____

Condiciones de la salud del Comportamiento

PA ☐ Ansiedad _____
PC ☐ Depresión _____
PH ☐ Desorden del sueño _____
PI ☐ Síndrome de Tourette _____
PJ ☐ Otros _____

Respiratorio

RA ☐ Brocoespasmo inducido por ejercicio ☐ *Inhalador
RE ☐ Enfermedad reactiva de las vías respiratorias _____
RF ☐ Otros _____
RG ☐ *Asma – actual ☐ *Inhalador
RH ☐ Asma – Diagnosticado por siempre

Neoplasias (Cáncer/Tumores)

TI ☐ Otros _____

Renal y Genitourinario

UB ☐ Infección Crónica del Tracto Urinario _____
UC ☐ Dismenorrea (periodos menstruales dolorosos) _____
UD ☐ Condición genito-urinaria otro _____
UH ☐ Condición renal otro _____

Ojo y Oído

YB ☐ Discapacidad Auditiva _____
YA/YC ☐ Infecciones Crónicas del Oído ☐ Infección del Oído _____
YD ☐ Discapacidad Visual _____
YE ☐ Condición de la Vista _____
YF ☐ Usa lentes _____ última evaluación de la vista: _____

Se necesita medicamento en casa? ☐ No ☐ Sí Por favor enumere: _____

Se necesita medicamento en la escuela? ☐ No ☐ Sí Por favor enumere: _____

Hospital de preferencia: _____

Si el padre/tutor o el contacto de emergencia autorizado no pueden ser contactados en el momento de una emergencia médica, y si la atención inmediata es urgente a juicio de las autoridades escolares. Autorizo y ordeno a las autoridades escolares que envíen al estudiante al hospital o al médico más accesible. Entiendo que asumiré responsabilidad total por el pago de cualquier servicio prestado. Entiendo que la información dada anteriormente se compartirá con el personal escolar apropiado que necesita saber para proporcionar la salud y la seguridad de mi estudiante. Yo otorgo mi permiso para que el personal del Distrito escolar de Snohomish obtenga y meta las fechas de las vacunas en el WAIS para mantener el archivo de vacunas de mi estudiante.

Fecha: _____ Firma del Padre/Tutor: _____ Teléfono: _____

INFORMACIÓN DE URGENCIA

Nombre del estudiante en letras de molde: _____ Camión #: _____

*Para poder proveer atención inmediata y segura para su hijo/a y para cumplir con sus deseos en caso de daño o enfermedad en la escuela, requerimos la siguiente información. Favor de llenar completamente. **En letras de molde, por favor.***

Nombre del estudiante: _____ Cumpleaños: _____ Año en que gradúe: _____
Apellido Primer Inicial del segundo

Dirección de la casa: _____ Teléfono de la casa: _____
Calle Ciudad CP

Vive con: ☐ Padres ☐ Madre sola ☐ Madre/padrastro ☐ Guardián ☐ Padre solo ☐ Padre/Madrastra

Otro: _____

Nombre de padre/madre/Guardián 1: _____ Correo electrónico: _____

Empleador: _____ Tel. del trabajo: _____ Celular: _____

Nombre de padre/madre/Guardián 1: _____ Correo electrónico: _____

Empleador: _____ Tel. del trabajo: _____ Celular: _____

Idioma principal en la casa : ☐ Inglés ☐ Español ☐ Otro: _____

Guardería (si tiene): _____ Teléfono: _____

Proveedor de atención médica (si hay): _____ Teléfono: _____

Favor de llenar lo siguiente si el estudiante tiene un padre o madre con quien no vive que puede hacer decisiones urgentes para el estudiante y puede recibir copias de documentos que tienen que ver con este estudiante, incluso noticias, reportes de calificaciones, correspondencia, etc..

Dirección de la casa: _____ Teléfono de la casa: _____
Calle Ciudad CP

Nombre de padre/madre/Guardián 1: _____ Correo electrónico: _____

Donde trabaja: _____ Tel. del trabajo: _____ Celular: _____

Nombre de padre/madre/Guardián 2: _____ Correo electrónico: _____

Donde trabaja: _____ Tel. del trabajo: _____ Celular: _____

Además de los padres/guardianes, si no se puede poner en contacto con usted, la escuela puede hablar con y mandar a su hijo/a con cualquier de las siguientes personas:

Nombre 1: _____ Parentesco: _____

Teléfono: _____ Tel del trabajo : _____ Celular: _____

Nombre 2: _____ Parentesco: _____

Teléfono: _____ Tel del trabajo : _____ Celular: _____

Nombre 3: _____ Parentesco: _____

Teléfono: _____ Tel del trabajo : _____ Celular: _____

Favor de alistar todos sus hijos en el Distrito escolar de Snohomish este año. (Favor de alistar los estudiantes en esta escuela primero.)

Apellido	Primer nombre	Escuela	Grado
_____	_____	_____	_____
_____	_____	_____	_____
_____	_____	_____	_____

Firma de padre/madre o guardián legal: _____ Fecha: _____

Favor de tachar aquí si hay información nueva en este formulario. ☐

*****HAY QUE REGRESAR ESTE FORMULARIO PARA INSCRIBIRSE**

Rev.12/2019

2023–2024 special observances

September

National Hispanic Heritage Month
Attendance Awareness Month
Deaf Awareness Month
Library Card Sign-Up Month
National Suicide Prevention Month
10–16 Arts in Education Week

October

Filipino American History Month
German American Heritage Month
Global Diversity Awareness Month
Italian American Heritage Month
LGBTQ History Month
National Disability Awareness Month
Polish American Heritage Month
School Principals Month
Dyslexia Awareness Month
Bullying Prevention Month
National Book Month
Farm to School Month
9–13 School Lunch Week
16–20 School Bus Safety Week

November

National American Indian and
Alaskan Native Heritage Month
Military Family Appreciation Month
Homeless Youth Awareness Month
Learn a Foreign Language Month
10 Community Education Day
17 Substitute Educators Day
6–10 School Psychology Week
13–17 American Education Week

December

2 Special Education Day
6–12 Computer Science Education Week

January

Poverty Awareness Month

February

Black History Month
CTE Month
5–9 School Counseling Week
17–24 FFA Week

March

Women's History Month
Gender Equality Month
Irish–American Heritage Month
Music in Our Schools Month
Middle Level Education Month
Nutrition Month
Social Work Month
Youth Art Month
Developmental Disabilities Awareness Month
2 Read Across America Day
3–9 School Social Work Week
4–8 School Breakfast Week
11–15 Education Support Professionals Week

April

Arab American Heritage Month
Autism Awareness/Acceptance Month
Month of the Military Child
National Volunteer Month
Mathematics and Statistics Awareness Month
Poetry Month
Occupational Therapy Month
School Library Month
4 National School Librarian Day
22 School Bus Driver Appreciation Day
24 Administrative Professionals Day
7–13 School Library Week
22–26 Public School Volunteer Week

May

Asian Pacific American Heritage Month
Haitian Heritage Month
Jewish American Heritage Month
Mental Health Awareness Month
Better Hearing and Speech Month
National Physical Fitness and Sports Month
National Water Safety Month
1 National College Decision Day
1 School Principals Appreciation Day
3 School Lunch Hero Day
7 Teacher Appreciation Day
8 School Nurse Day
1–7 Physical Education and Sport Week
6–10 Teacher Appreciation Week

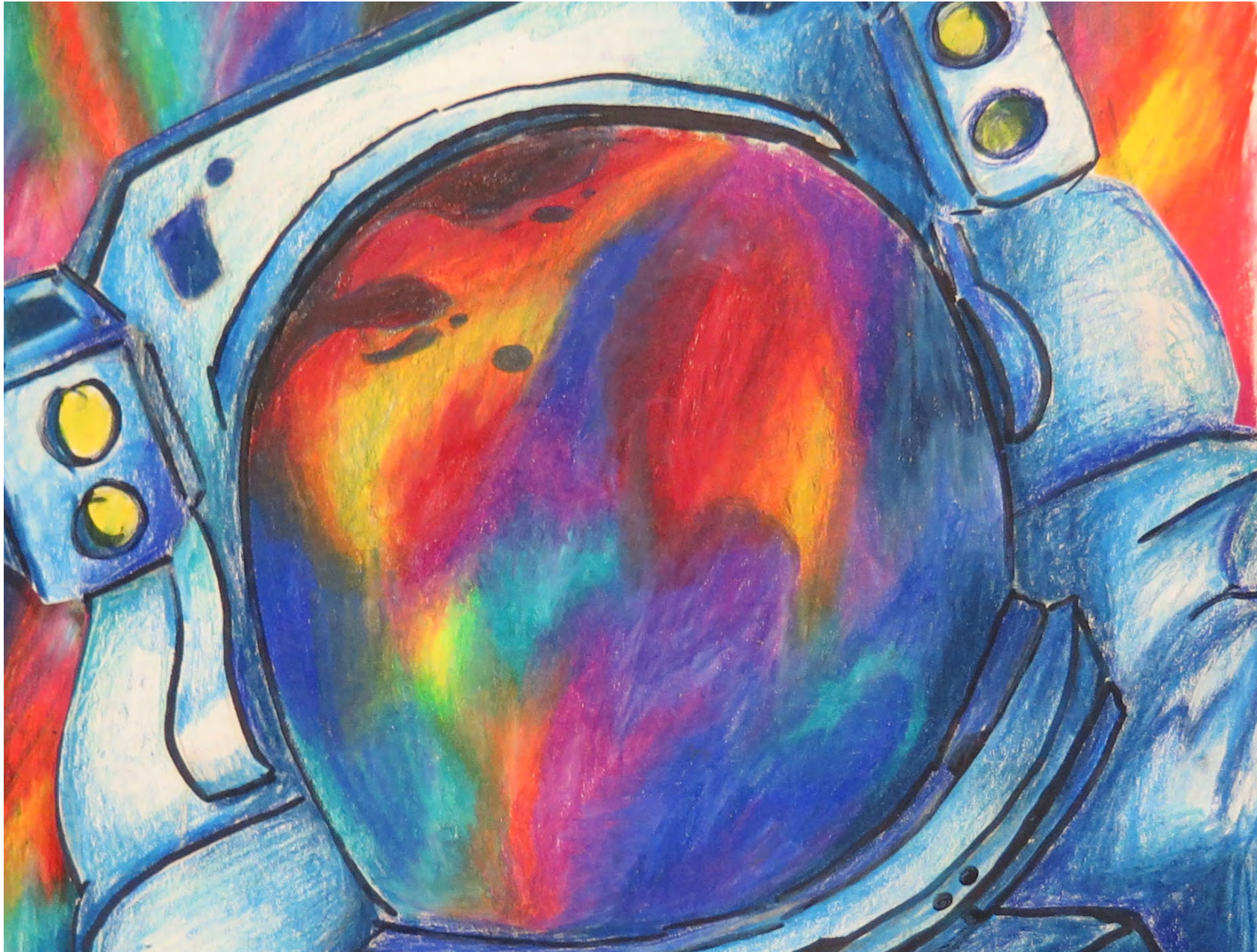
June

National Caribbean American Heritage Month
LGBTQ+ Pride Month

July

French American Heritage Month

For more information about cultural awareness and recognitions and the district's Equity and Inclusion department, please visit www.sno.wednet.edu/equityandinclusion.



*Kai Foote –
Snohomish High School*

www.sno.wednet.edu / Snohomish School District, 1601 Avenue D, Snohomish, WA 98290

All student artwork in this publication is representative of the 2022–2023 school year.

This calendar is produced by Snohomish School District Communications Department.